



HC308

Ultra Fast Fill Quick Coupler Male SAE Male Thread Instruction Manual

▲ WARNING

Failure to follow these instructions or to properly install and maintain this equipment could result in gas leakage, fire or explosion causing property damage and personal injury or death.

Oasis products must be installed, operated and maintained by trained and competent personnel in accordance with all applicable local codes, rules and regulations in addition to the Oasis Instructions.

Oasis Engineering Ltd. will not be held liable in such circumstances where installation, operation and maintenance procedures were performed by incompetent personnel resulting in improper assembly, unsafe operation, equipment damage or personal injury.

Oasis recommends that all service technicians should watch the Product Servicing Video before attempting to service this part.

Oasis Engineering Ltd
129 Birch Avenue, Tauranga, New Zealand.
T: +64 7 928 3808
E: info@oasisNGV.com
W: www.OasisNGV.com



Warning!

High pressure gas and gas equipment can cause serious harm to both infrastructure and personnel if safety precautions are not followed.

Oasis recommends considering the use of the following PPE when working with high pressure along with any other site specific health and safety requirements:



Foot Protection



Hearing Protection



Safety Helmets



Hand Protection



Safety Glasses



Ensure the system is clean of debris, vented and isolated before any installation or servicing work is carried out.

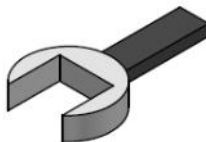
To help with coupling in cold conditions



Interflon Fin Super (Aerosol) or a similar product

If coupler is hard to uncouple due to cold temperature icing, spray both male & female coupling faces with Interflon Fin Super (aerosol) or a similar product to help with ease of uncoupling in cold conditions.

Tools Required



Spanner (Wrenches)



Thread Tape

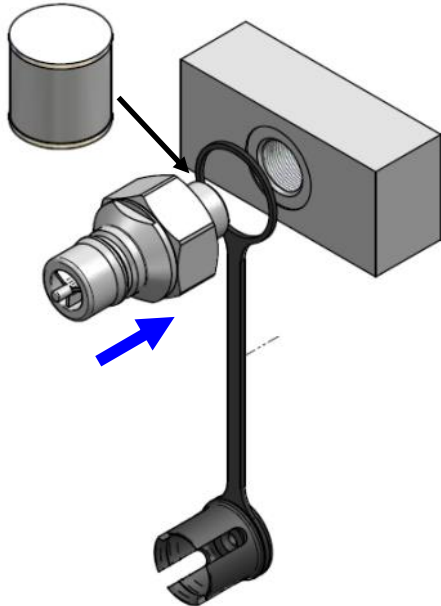


Anti Seize Grease
- Swagelok Silver Goop
- Omega 99
- or similar

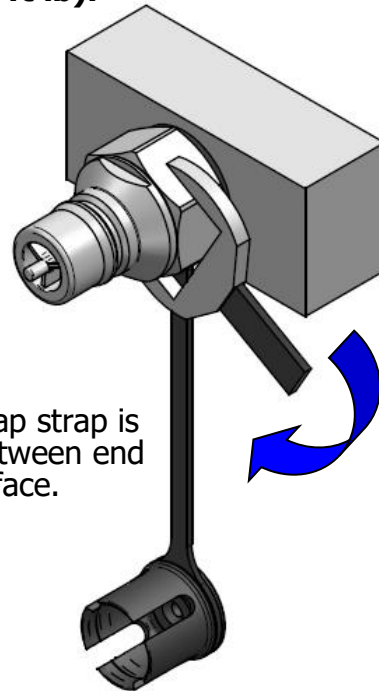


Spray bottle (Snoop or soapy water)

1. Apply never seize to SAE thread and screw coupler into port. Ensure dust cap strap is around body.

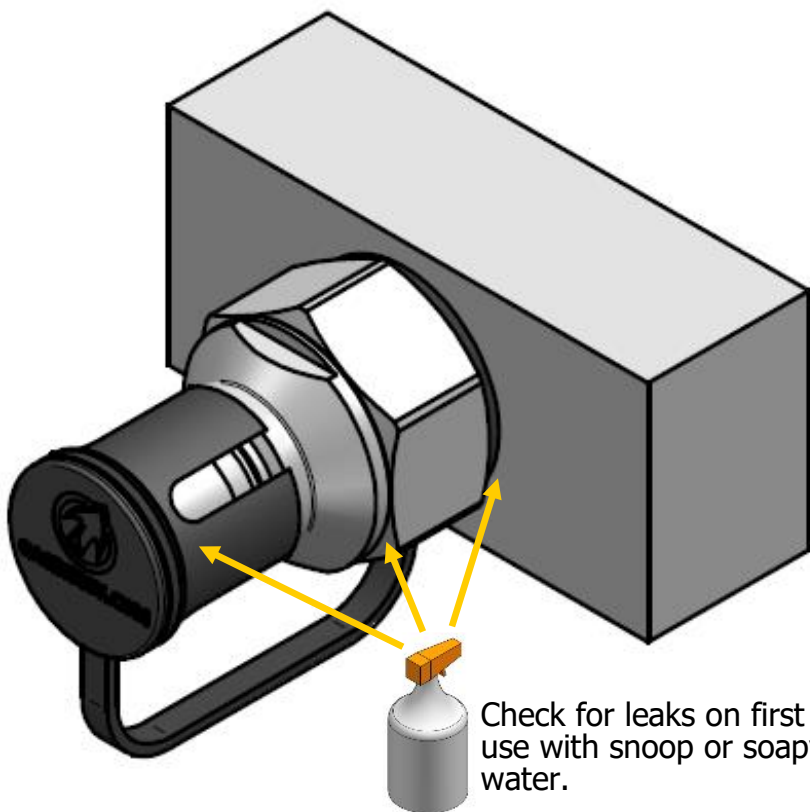


2. Tighten connection to 180 Nm (132.8 ft lb).



Ensure dust cap strap is not caught between end cap and spot face.

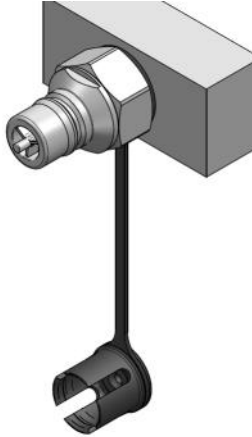
3. Installation complete. Put dust cap over coupler when not in use.



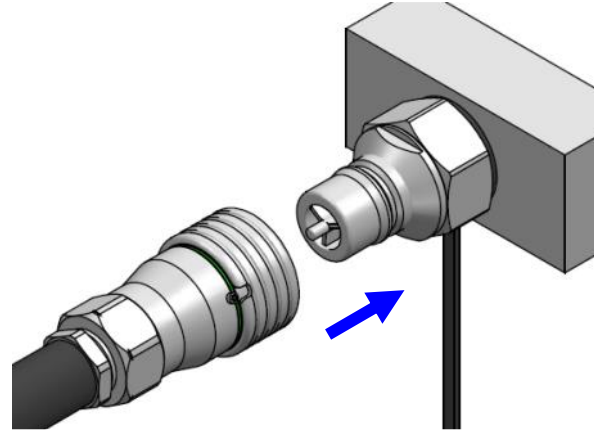
Check for leaks on first use with snoop or soapy water.



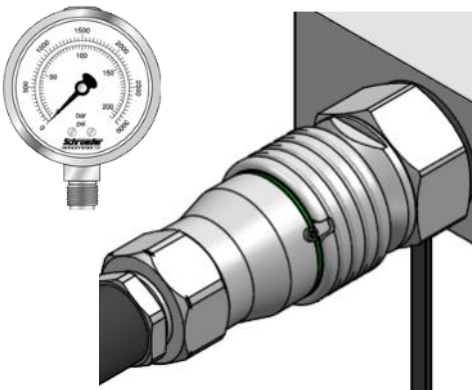
1. Remove dust cap from male coupler.



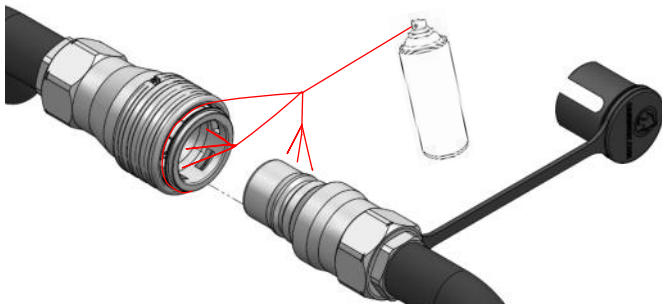
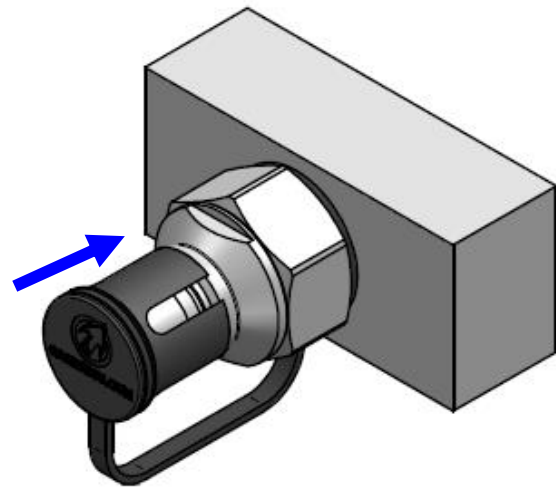
2. Connect with female coupler, ensure coupler is connected correctly.



3. Use coupler as required. Ensure system is vented before disconnecting.



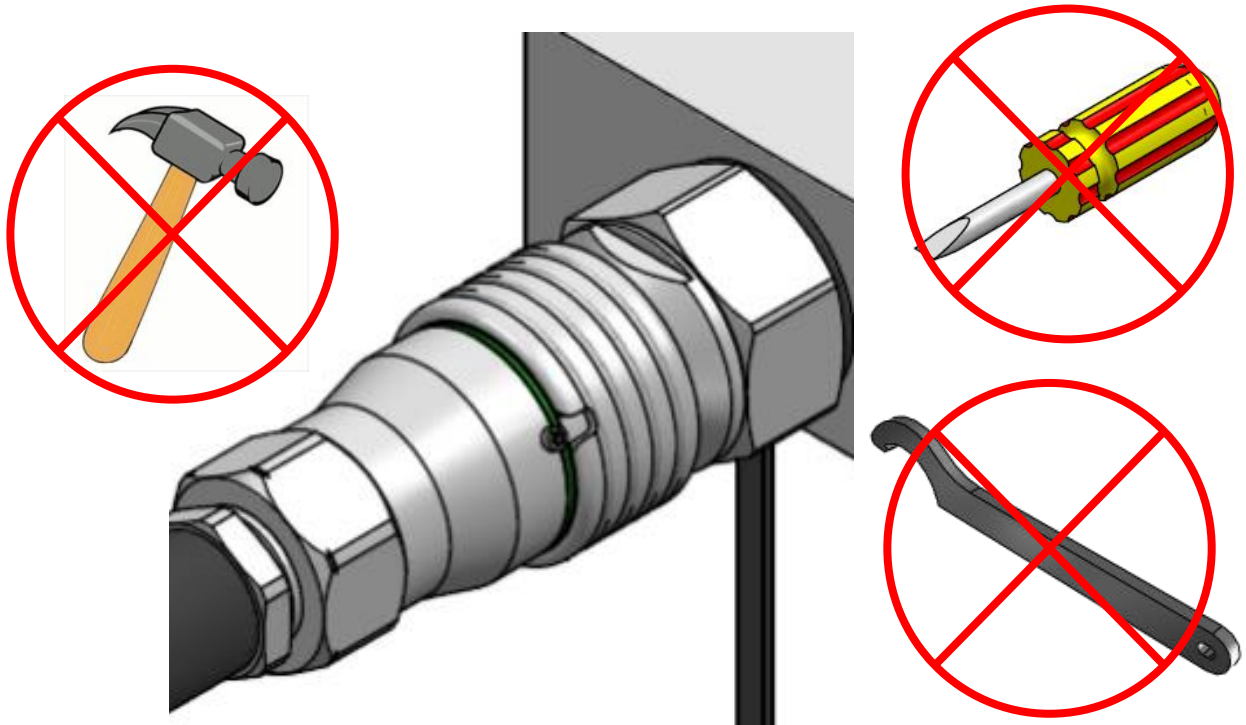
4. Reattach dust cap on male coupler after use.



If coupler is hard to uncouple due to cold temperature icing, spray both male & female coupling faces with Interflon Fin Super (aerosol) or a similar product to help with ease of uncoupling in cold conditions.

Warning!

Do not use excessive impact or twisting force to try and remove coupler if frozen. Doing so may damage the coupler or cause fixed connections to come loose. To aid use of the coupler when ice is present use HC308-COVER (sold separately).



Oasis recommends the use of the following PPE when operating coupler:



Foot Protection



Hearing Protection



Safety Helmets



Hand Protection



Safety Glasses

**Stand clear of coupler when in use.
The use of hose restraints is recommended
while using the HC308 couplers, contact Oasis
Engineering for more info.**

Service Kit Parts



Poppet spring



Male poppet
(pre - assembled)



1x 916 O ring



1x Backup O-ring



1x Body O-ring



Silicone Grease
Rocol MX22 or similar
(For all O-rings)

The Complete Oasis Seal Kit must be used

Tools Required



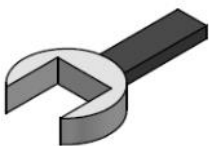
Cleaner (Warm Soapy
Water or Similar)



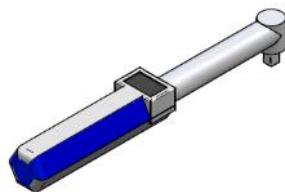
Pick Tool



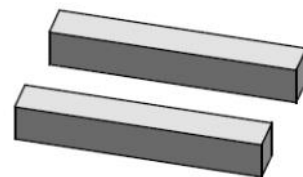
Anti Seize Grease
(Loctite 771 or Similar)
For All Threads



Spanner/
Wrenches
(60mm)

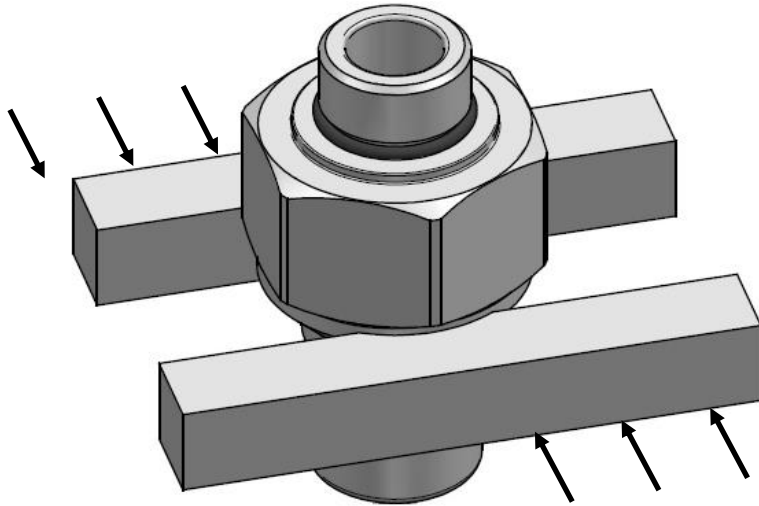


Torque Wrench

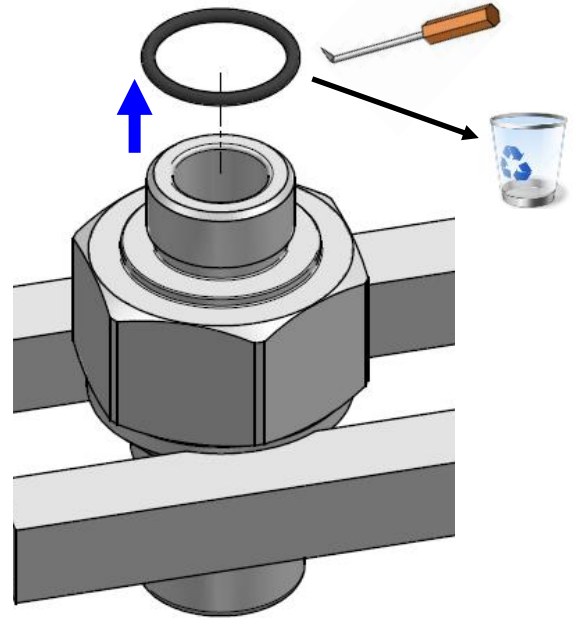


Vice

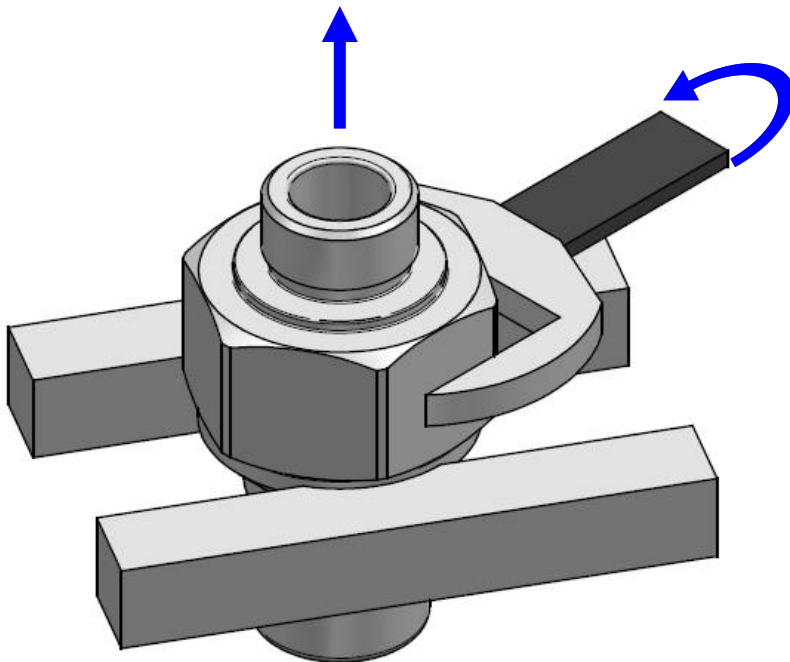
1. Clamp male coupler in vice.



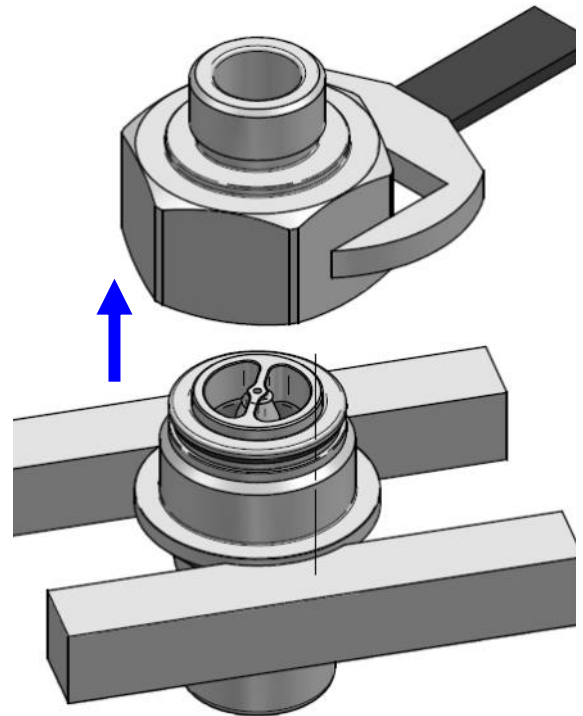
2. Remove 916 O ring and discard.



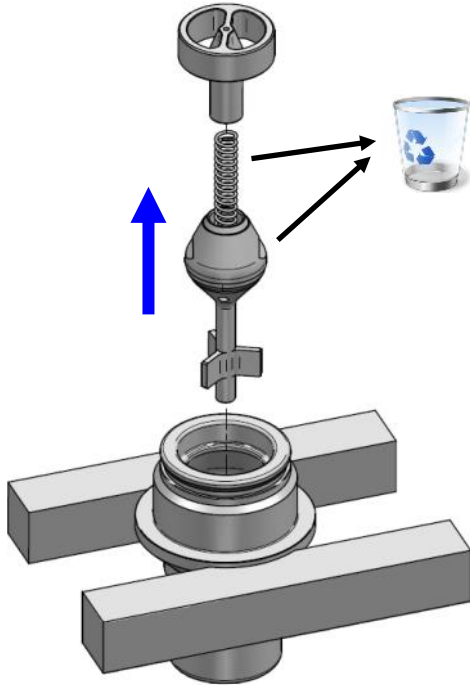
3. Unscrew end cap from body.



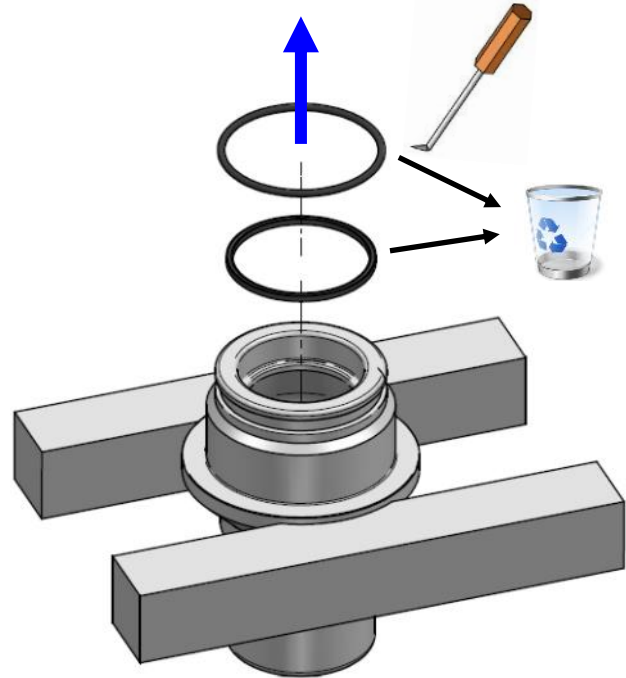
4. Remove end cap.



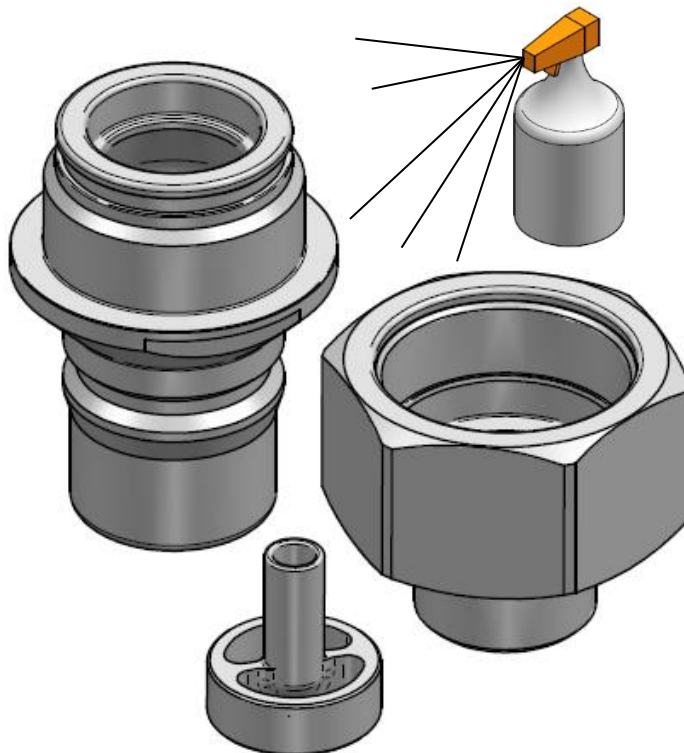
5. Remove and discard the poppet and spring.



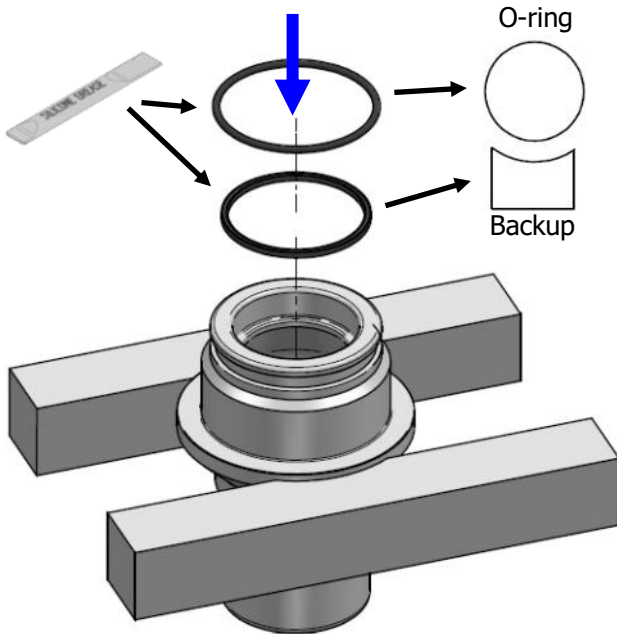
6. Pick out the O-ring and backup and discard. Be careful not to damage body.



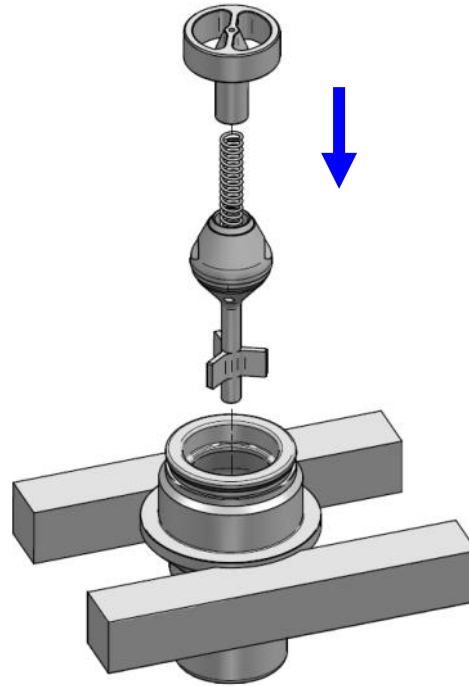
7. Clean all components and inspect for damage. In particular the sealing faces, poppet retainer and coupler profile.



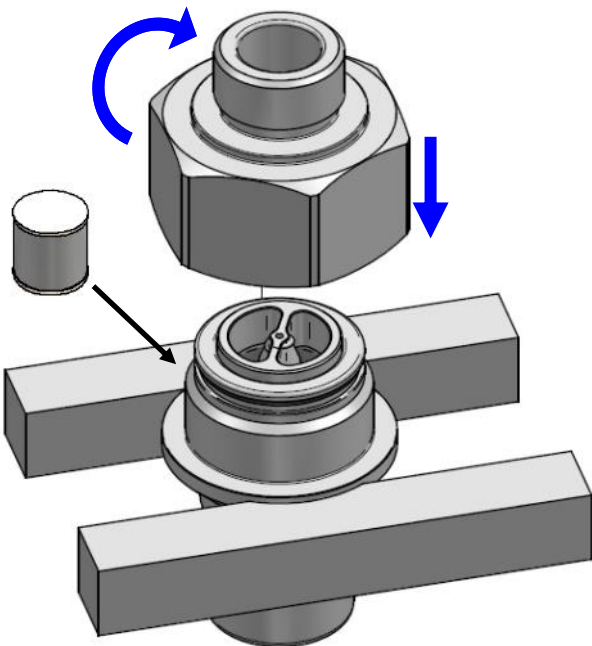
1. Install O ring and backup.



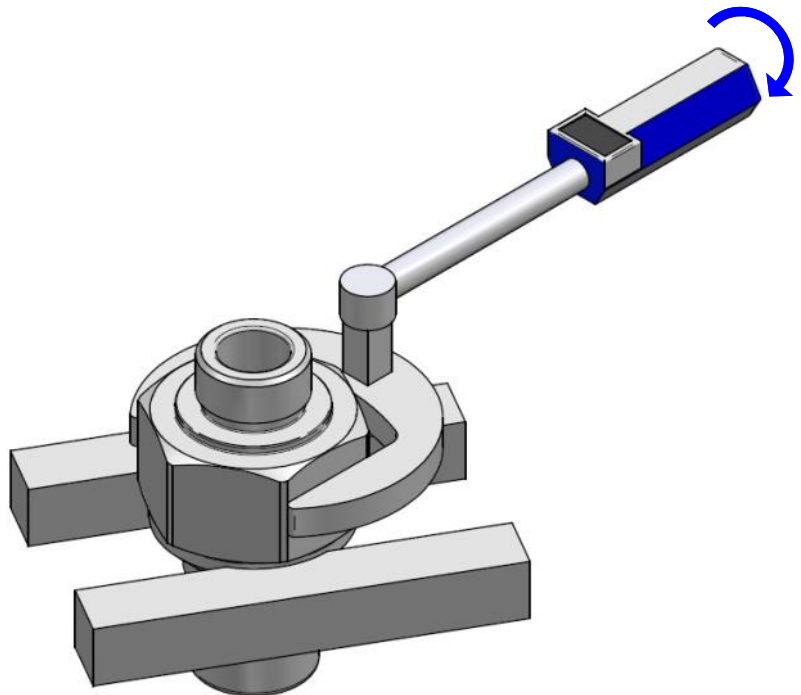
2. Install the new poppet, spring and retainer.



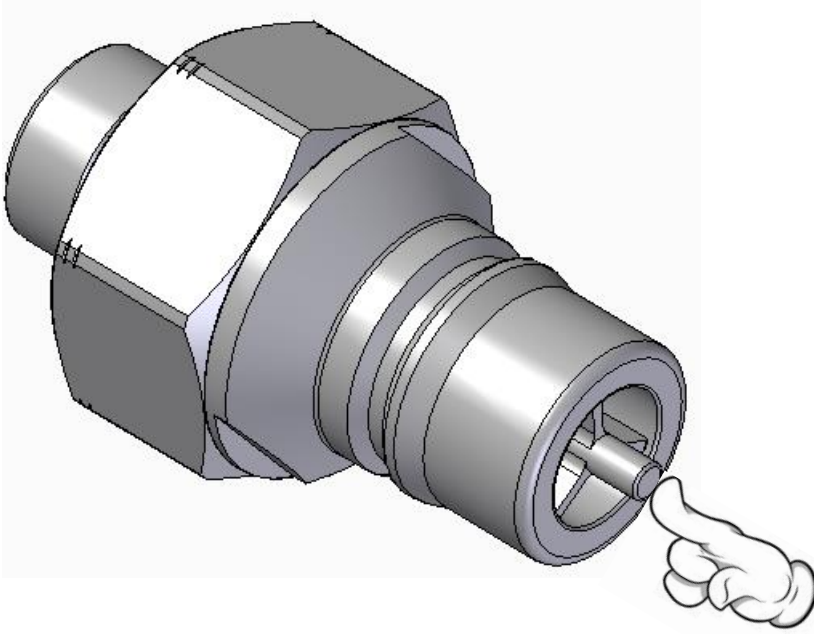
3. Screw end cap back into body.



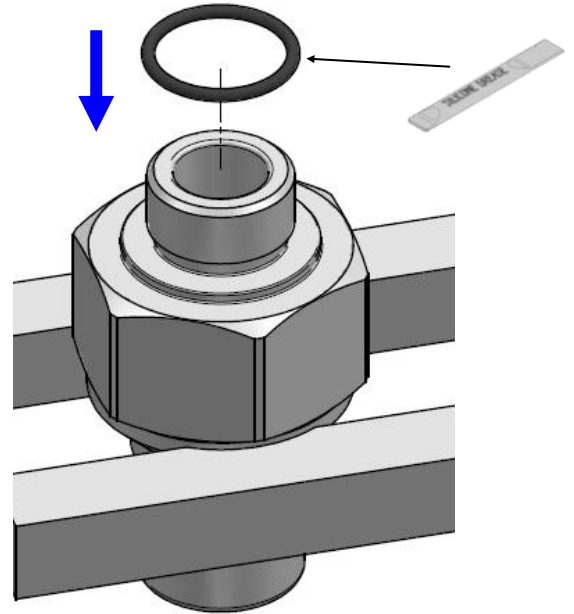
**4. Torque end cap to 200 Nm
(147.5 ft lb).**



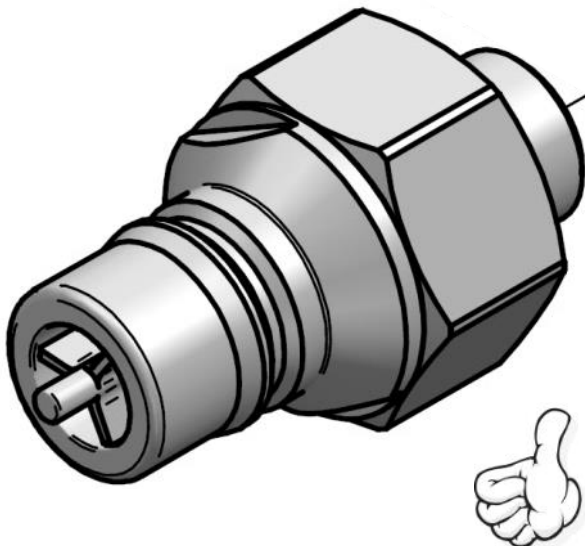
5. Check the poppet valve is free to move by depressing with a finger and allowing it to return.



6. Replace 916 O-ring.

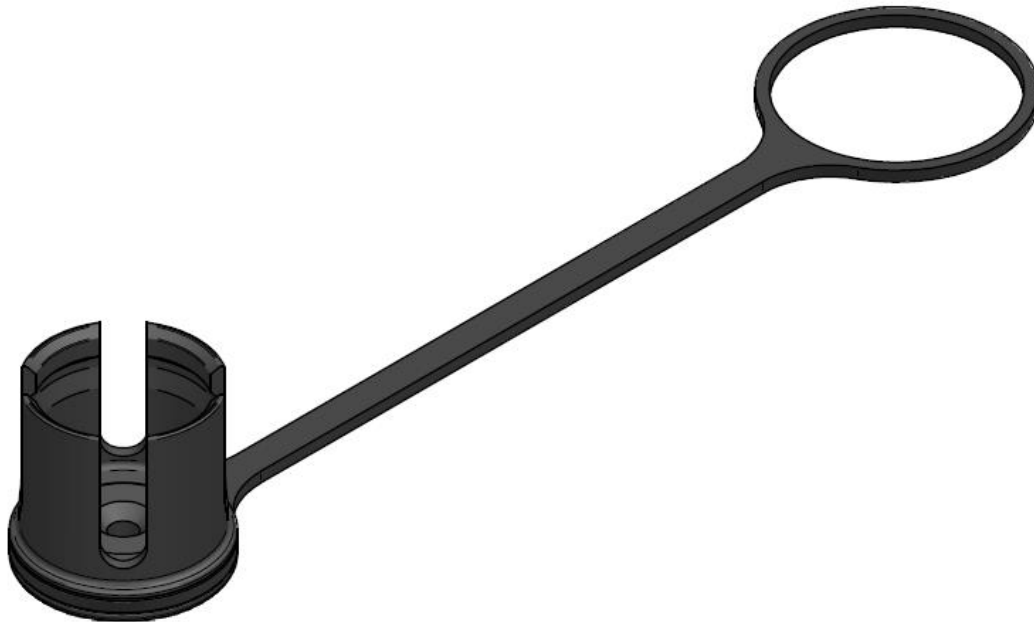


7. Servicing of coupler complete.



8. Refer to installation instructions for re-fitment of coupler.

Accessories Available



HC308-SDC — 1" Ultra Fast Fill Quick Coupler Male - SAE Male Thread Dust Cap

