



# **BV700 Series Handle replacement Instruction Manual**

## **▲ WARNING**

Failure to follow these instructions or to properly install and maintain this equipment could result in gas leakage, fire or explosion causing property damage and personal injury or death.

Oasis products must be installed, operated and maintained by trained and competent personnel in accordance with all applicable local codes, rules and regulations in addition to the Oasis Instructions.

Oasis Engineering Ltd. will not be held liable in such circumstances where installation, operation and maintenance procedures were performed by incompetent personnel resulting in improper assembly, unsafe operation, equipment damage or personal injury.

Oasis recommends that all service technicians should watch the Product Servicing Video before attempting to service this part.

Oasis Engineering Ltd  
129 Birch Avenue, Tauranga, New Zealand.  
T: +64 7 928 3808  
E: [info@oasisngv.com](mailto:info@oasisngv.com)  
W: [www.OasisNGV.com](http://www.OasisNGV.com)



## Warning!

**High pressure gas and gas equipment can cause serious harm to both infrastructure and personnel if safety precautions are not followed.**

**Oasis recommends considering the use of the following PPE when working with high pressure along with any other site specific health and safety requirements:**



Foot Protection



Hearing Protection



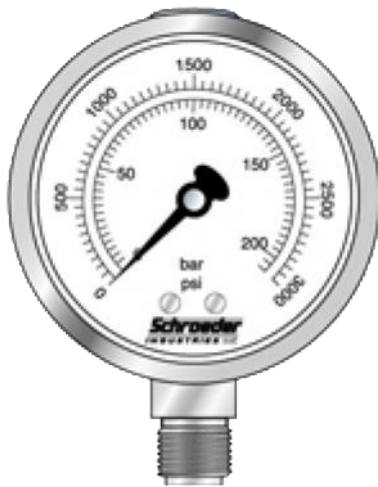
Safety Helmets



Hand Protection

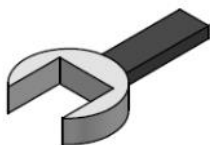


Safety Glasses



**Ensure the system is clean of debris, vented and isolated before any installation or servicing work is carried out.**

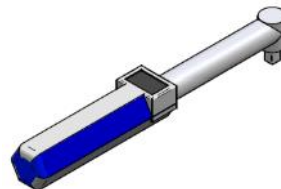
## Tools Required



Spanner  
(Wrenches)



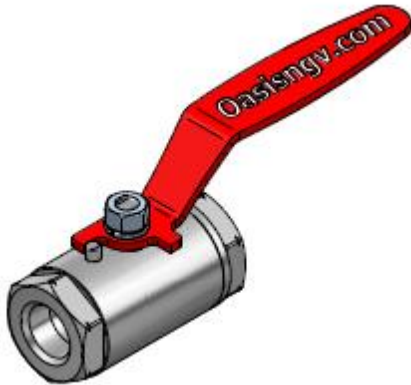
Soft Face  
Hammer



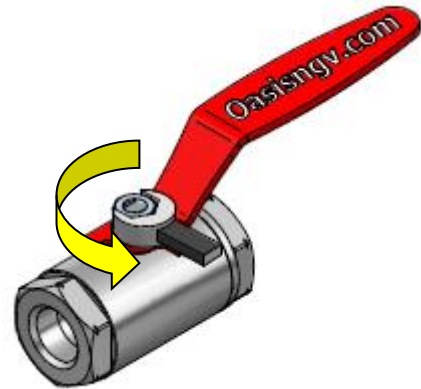
Torque Wrench

Nut sizes:  
BV702 = 10mm  
BV703/704 = 13mm  
BV706/ 708 = 19mm

1. Valve ready for removal of old handle



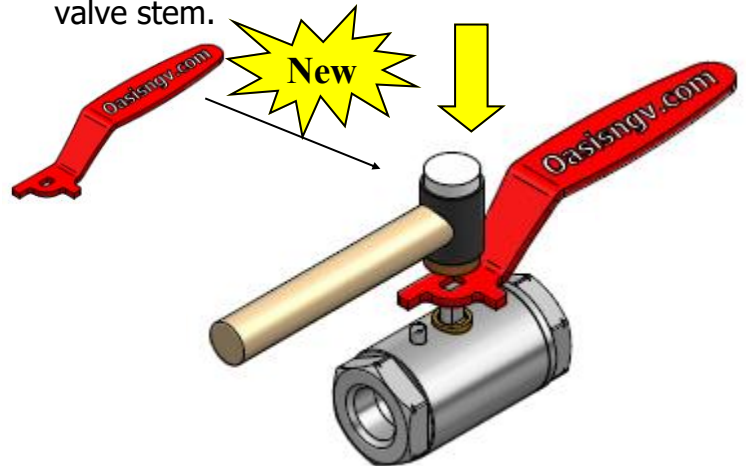
2. Undo stem nut using spanner.



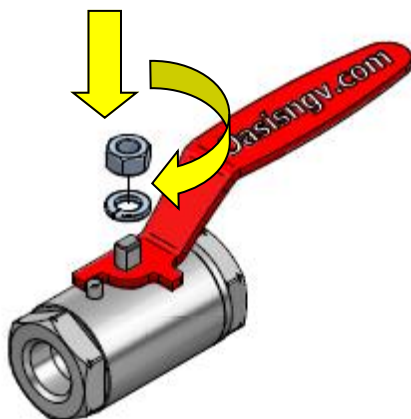
3. Remove handle from valve. Discard old handle.



4. Remove new handle from packaging. Use soft hammer to tap new handle onto valve stem.



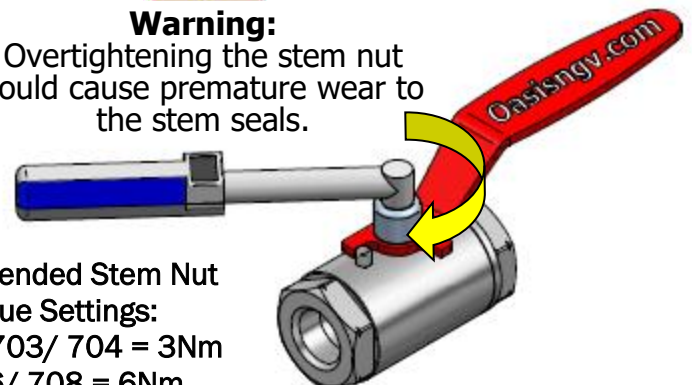
5. Install washer and washer to stem.



6. Torque stem nut using torque wrench to recommended torque settings.



**Warning:**  
Overtightening the stem nut could cause premature wear to the stem seals.



Recommended Stem Nut  
Torque Settings:  
BV702/ 703/ 704 = 3Nm  
BV706/ 708 = 6Nm

