



Member of the ELAFLEX Group



CV200 Series Check Valve Instruction Manual

▲ WARNING

Failure to follow these instructions or to properly install and maintain this equipment could result in gas leakage, fire or explosion causing property damage and personal injury or death.

Oasis products must be installed, operated and maintained by trained and competent personnel in accordance with all applicable local codes, rules and regulations in addition to the Oasis Instructions.

Oasis Engineering Ltd. will not be held liable in such circumstances where installation, operation and maintenance procedures were performed by incompetent personnel resulting in improper assembly, unsafe operation, equipment damage or personal injury.

Oasis Engineering Ltd
129 Birch Avenue, Tauranga, New Zealand.
T: +64 7 928 3808 F: +64 7 928 3809
E: info@oasisNGV.com
W: www.OasisNGV.com

Warning!

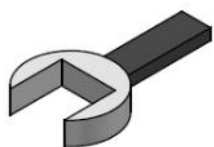
High pressure gas and gas equipment can cause serious harm to both infrastructure and personnel if safety precautions are not followed.

Oasis recommends considering the use of the following PPE when working with high pressure along with any other site specific health and safety requirements:



Ensure the system is vented and isolated before any installation or servicing work is carried out.

Tools Required



**Spanner
(Wrenches)**



Thread Tape



Anti Seize Grease
- Swagelok Silver Goop
- Omega 99
- or similar



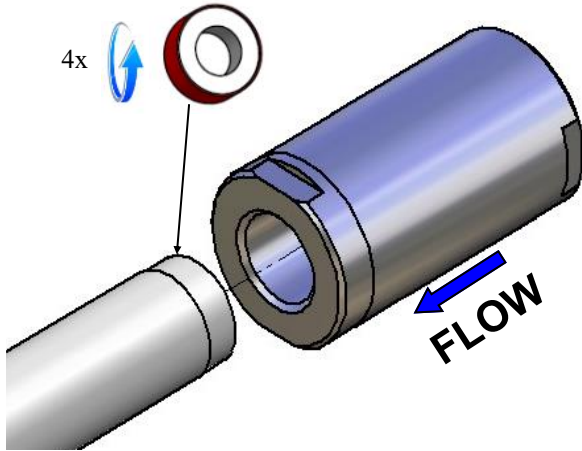
**Silicone Grease
(Recol MX22 or Similar)
For All O-Rings**



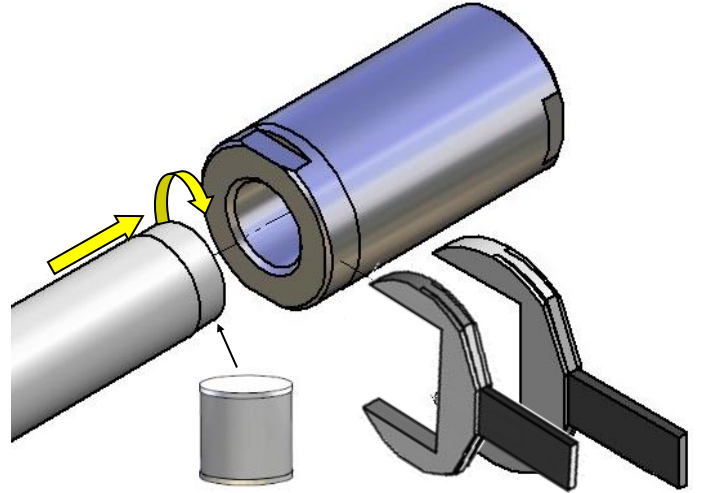
**Spray bottle
(Snoop or soapy water)**

2

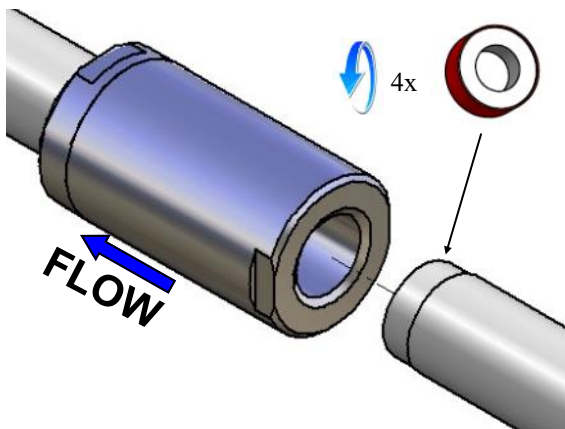
1. Apply thread tape.



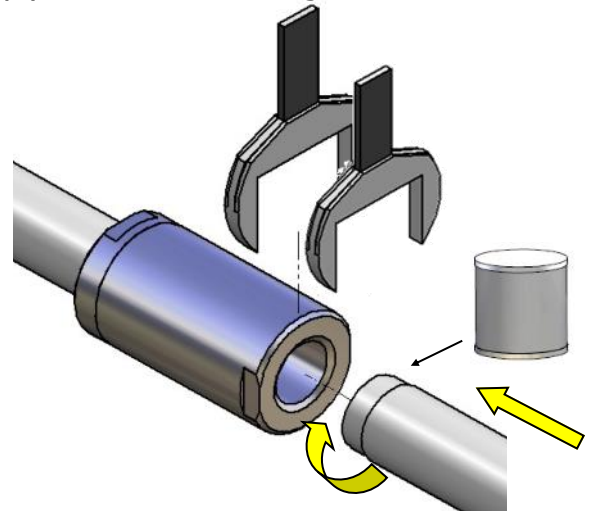
2. Apply never seize and tighten connection.



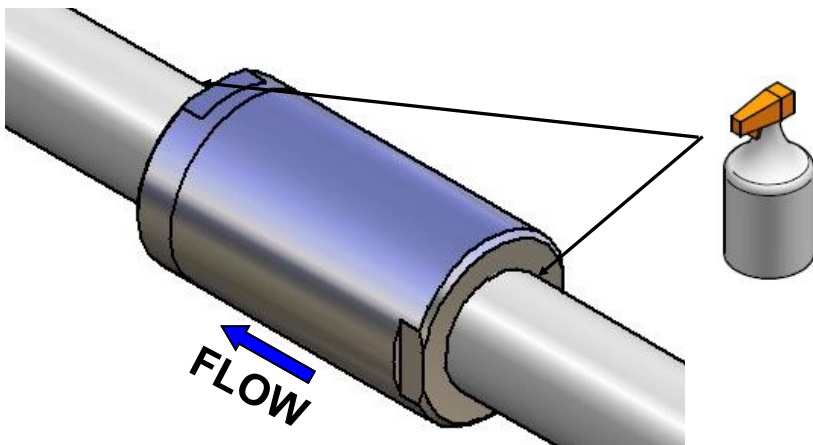
3. Apply thread tape.



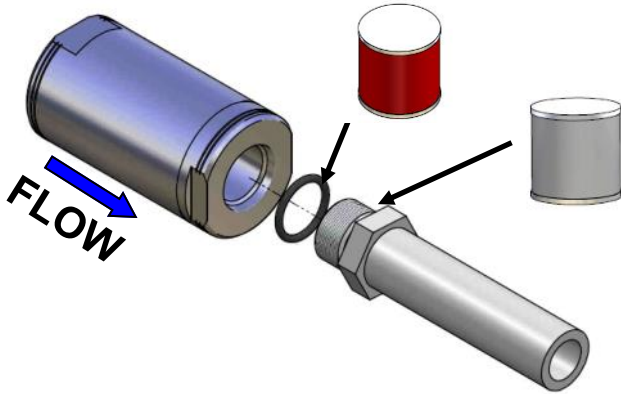
4. Apply never seize and tighten connection.



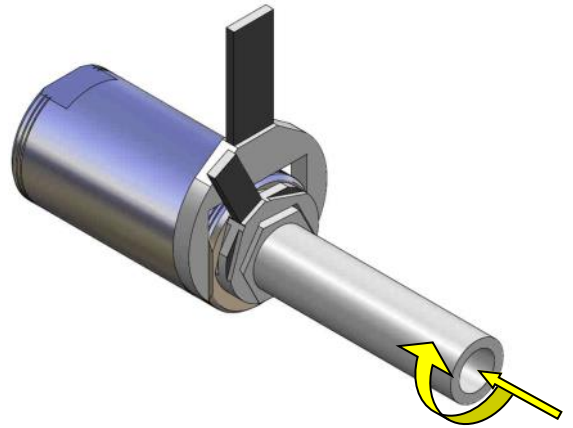
5. Leak test connection with Snoop or soap water.



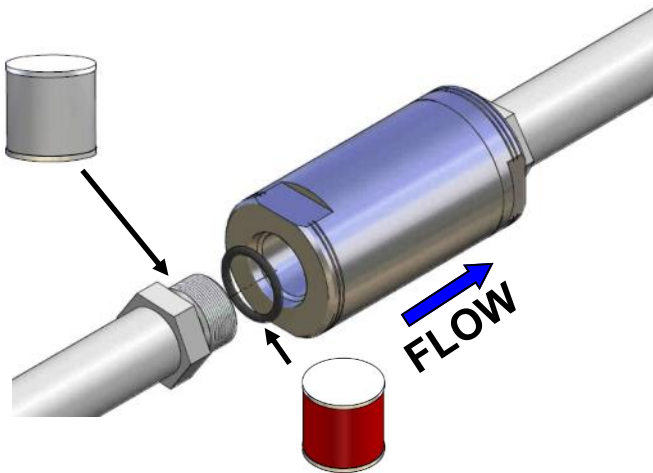
1. Apply never seize to thread and Silicone grease to the O-ring. Install the O-ring on the fitting if not pre-installed



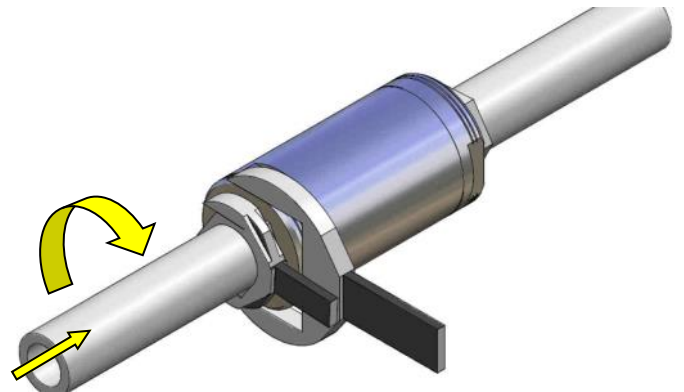
2. Screw the fitting into the body and torque to the fitting suppliers recommended tightening torque



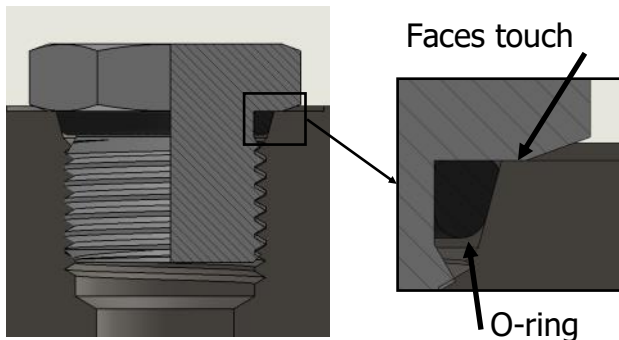
3. Apply never seize to thread and Silicone grease to the O-ring. Install the O-ring on the fitting if not pre-installed



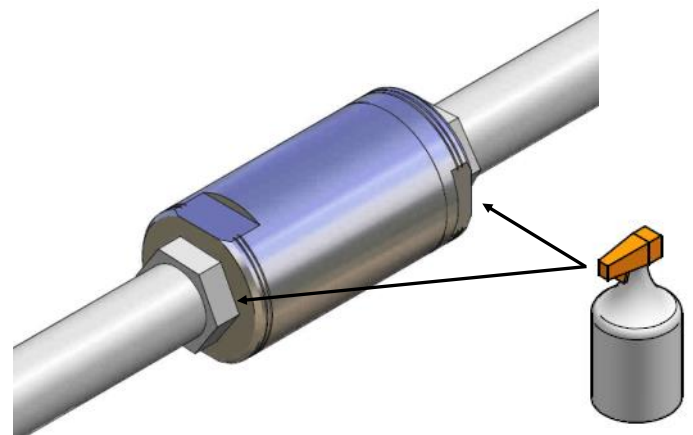
4. Screw the fitting into the body and torque to the fitting suppliers recommended tightening torque



5. Correctly tightened SAE port fittings should bottom out on the port face and the O-ring should neatly fill the void creating the seal.



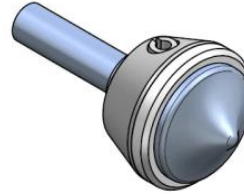
6. Leak test connection with Snoop or soap water.



Service Kit Parts



1 x Poppet Spring



1 x Poppet Assembly



1 x Cap O-ring



1 x Silicone Grease

The Complete Oasis Seal Kit must be used

Tools Required



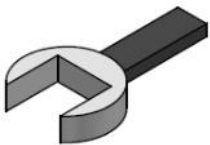
Cleaner (Warm Soapy Water or Similar)



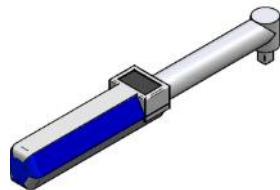
Pick Tool
Part Number:
TOOL-PICK
(Sold separately)



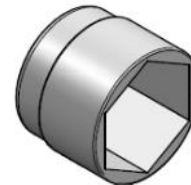
Anti Seize Grease
(Loctite 771 or Similar)
For All Threads



Spanner
(Wrenches)



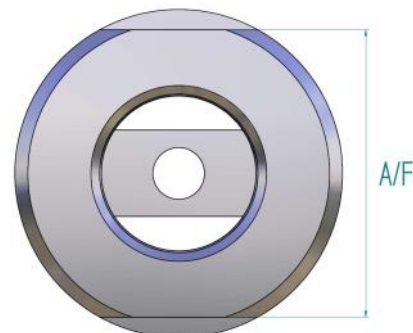
Torque Wrench



Sockets

Hex End Cap Sizes (A/F)

CV203=28mm
CV204= 33.3mm
CV206=48mm
CV208=54mm
CV212=79mm



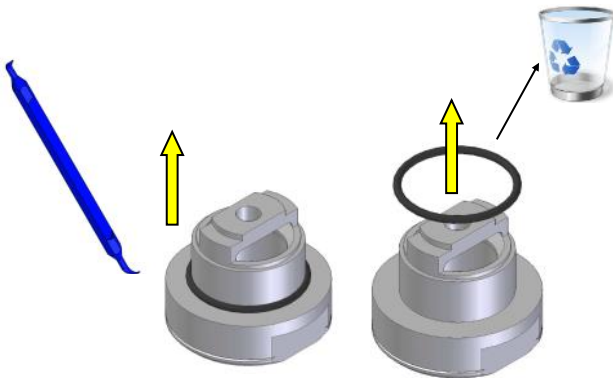
1. Undo body from cap.



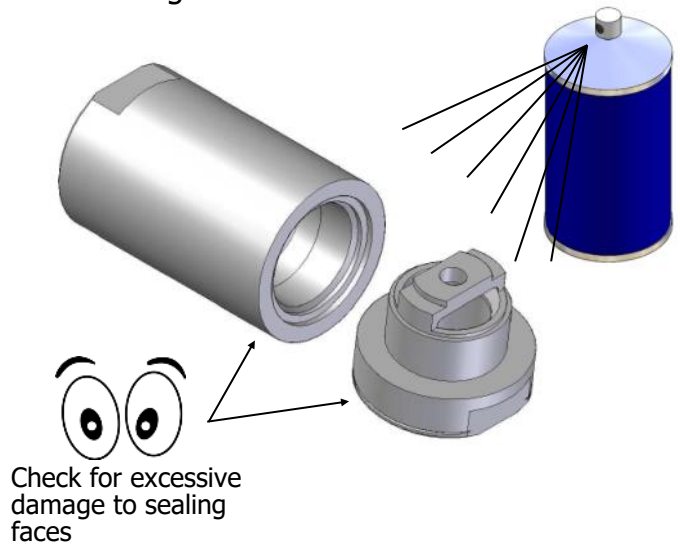
2. Discard Poppet and spring.



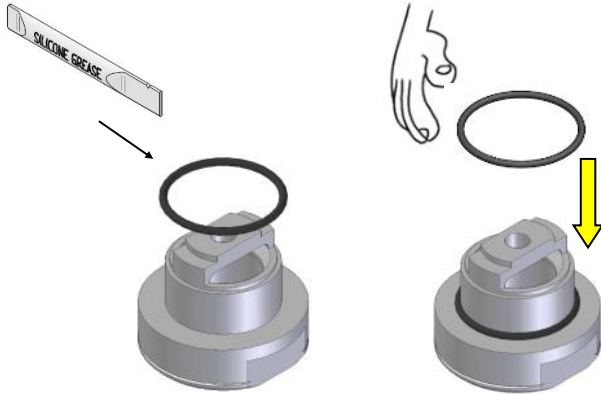
3. Discard O-ring.



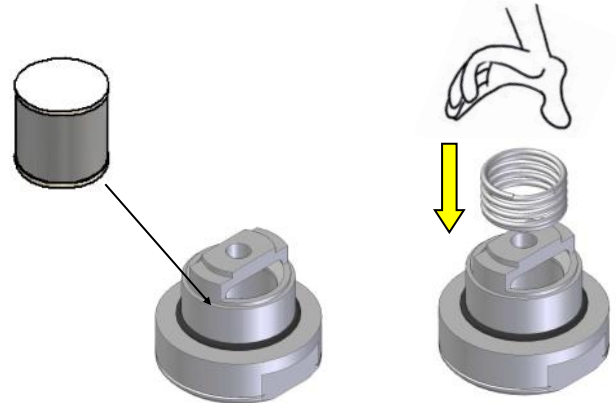
4. Clean components and inspect for damage



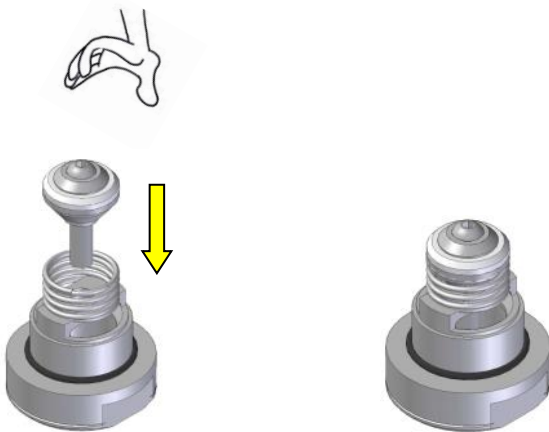
5. Grease O-ring and install.



6. Install spring.



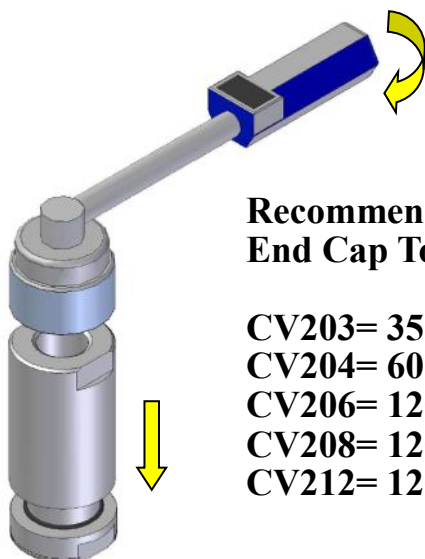
7. Install new poppet assembly.



8. Screw on body.



9. Tighten end cap.



**Recommended
End Cap Torque**

- CV203= 35 Nm
- CV204= 60 Nm
- CV206= 120Nm
- CV208= 120Nm
- CV212= 120Nm

10. Complete.



Follow the installation instructions on page 3 to re-install and leak test on first use.