

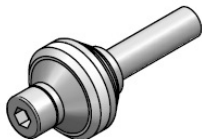


100 Series Breakaway Servicing Instructions

Service Kit Parts

**BC104-4NTSN
BC104-4NTBN**

2 x Poppet



2 x Spring



1 x Backup O-ring



1 x O-ring



**BC104-4NTSN-2
BC104-4NTBN-2**

2 x Poppet



2 x Spring



1 x Backup O-ring



1 x O-ring



1 x Vent Circlip

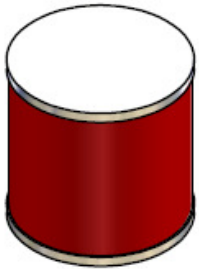


1 x Vent O-ring



The Complete Oasis Seal Kit must be used

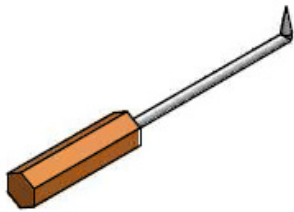
Tools Required



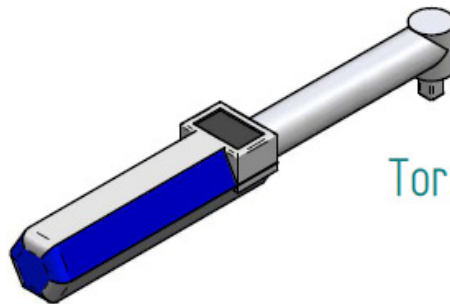
Silicone Grease
(Rocol MX22 or Similar)
For All O-rings



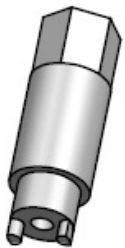
5mm Allen Key



Pick Tool

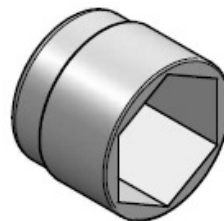


Torque Wrench



Retainer Tool

Part Number:
TOOL-HC104



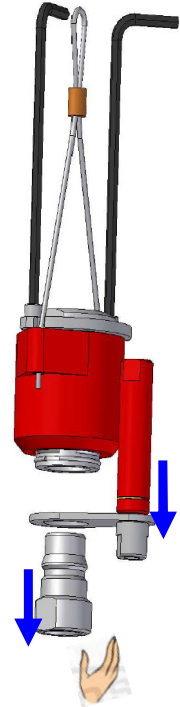
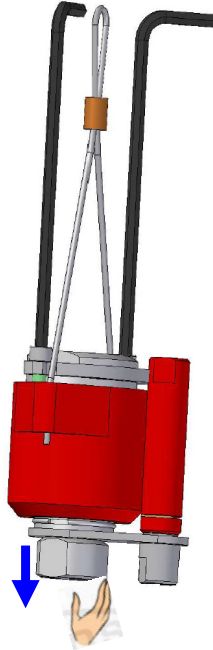
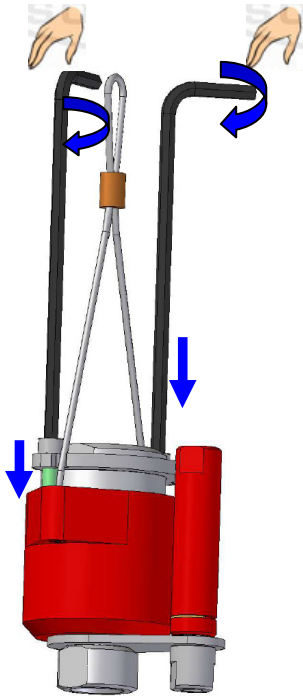
15mm Socket



Cleaner (Warm Soapy
Water or Similar)

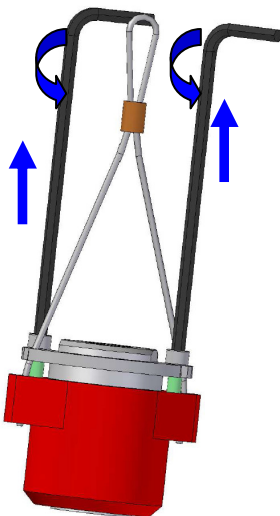
1. Remove Male Part

- A. Fully screw the assembly tool. B. Pull out the center. C.

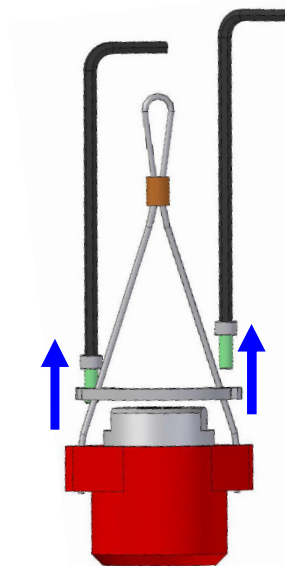


2. Remove the assembly tool.

A.



B.

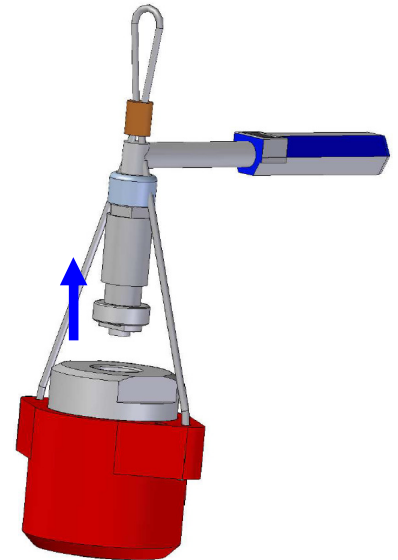
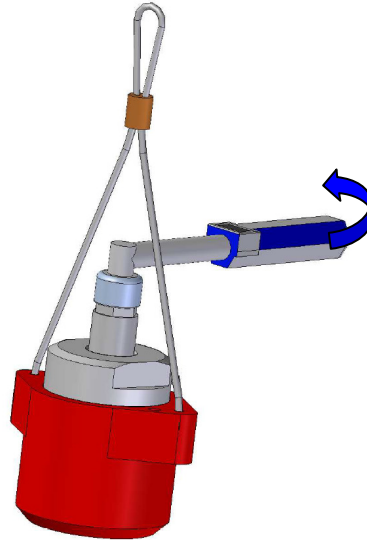
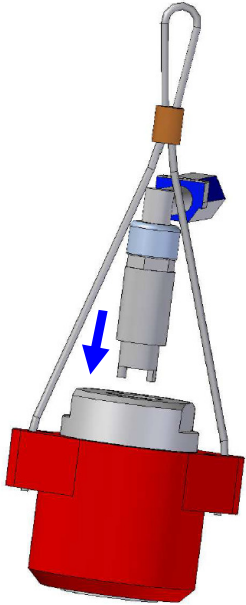


3. Remove Body Poppet Retainer

A. Insert retainer tool.

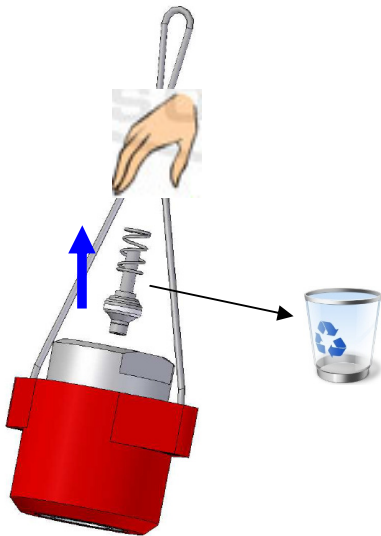
B. Undo the poppet retainer.

C.

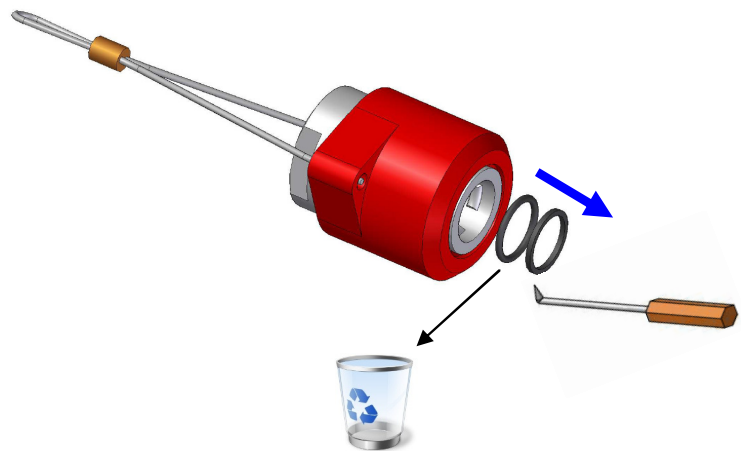


4. Discard spring & poppet.

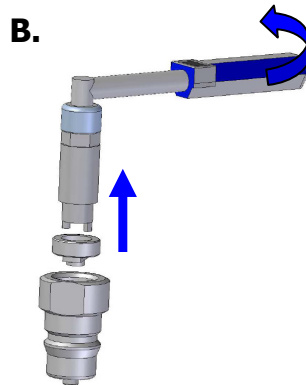
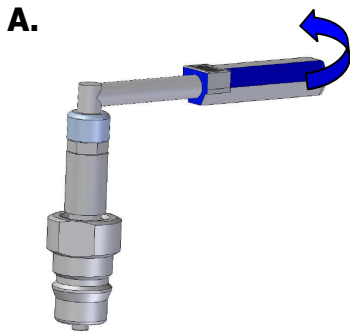
A.



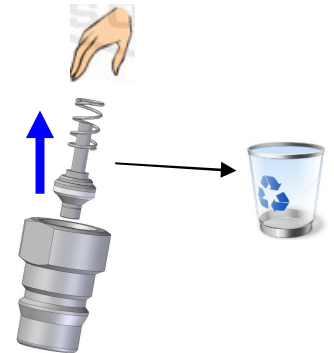
5. Discard O-rings.



6. Disassemble Male Part

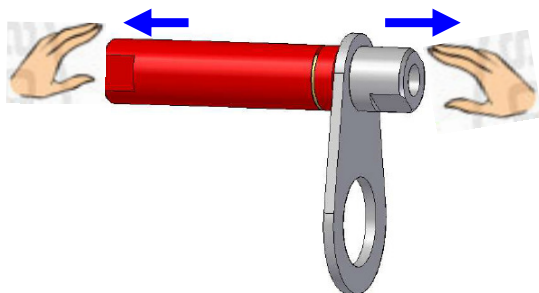


C. Discard spring & poppet

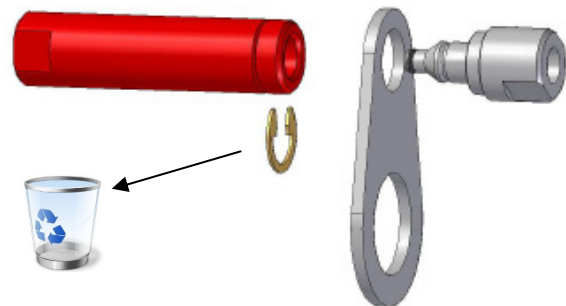


7. Disassemble vent line breakaway.

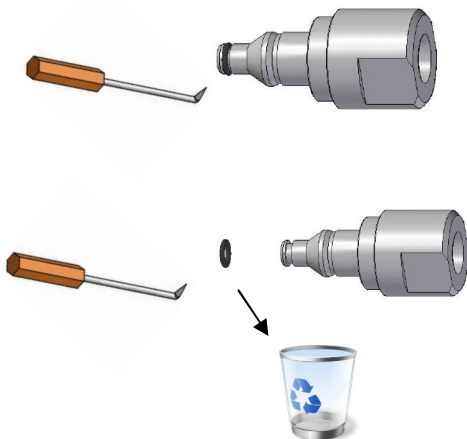
A. Pull apart



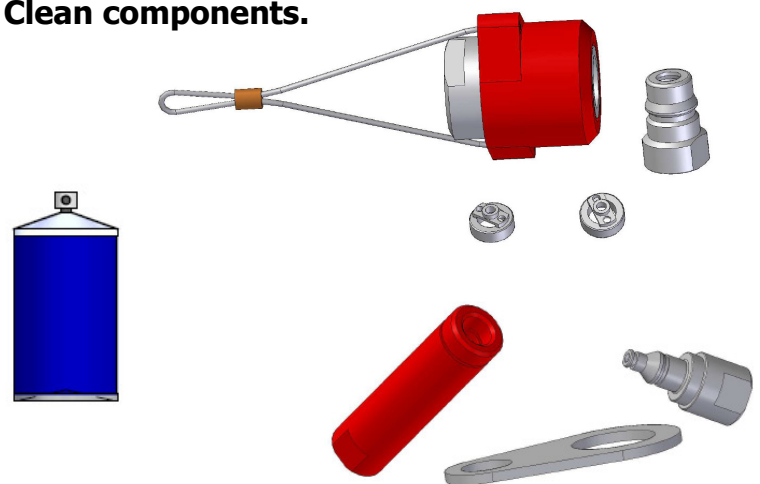
B. Discard circlip



C. Discard O-ring

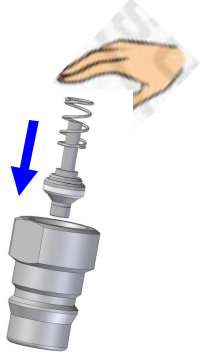


8. Clean components.

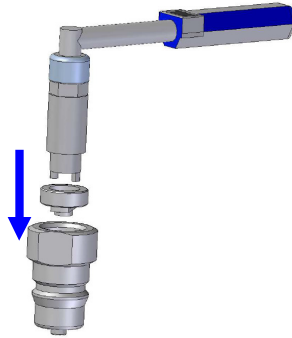


1. Assemble Male Component

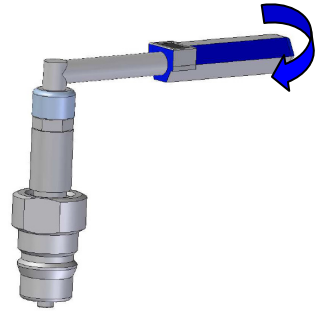
A. Insert new poppet and spring.



B. Screw poppet retainer.

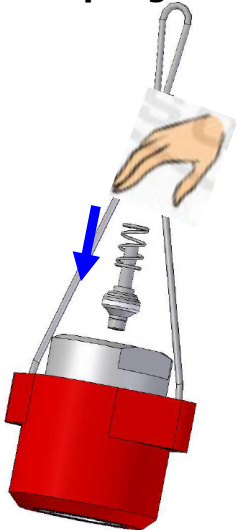


C. Torque to 20Nm.

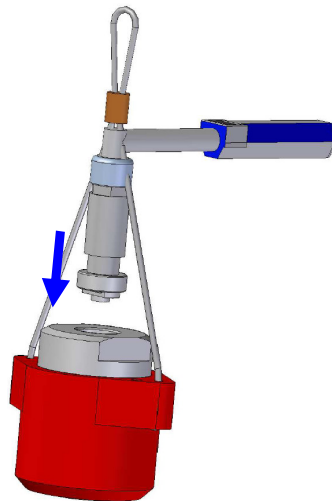


2. Assemble Body Poppet

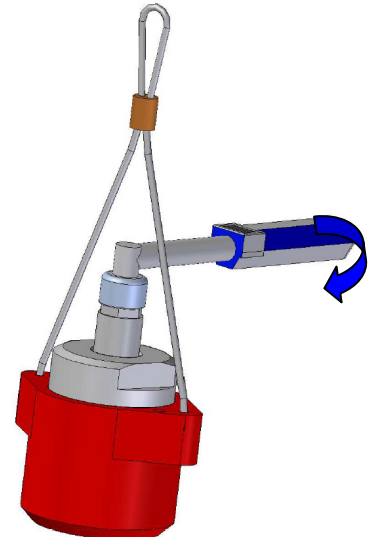
A. Insert new poppet and spring.



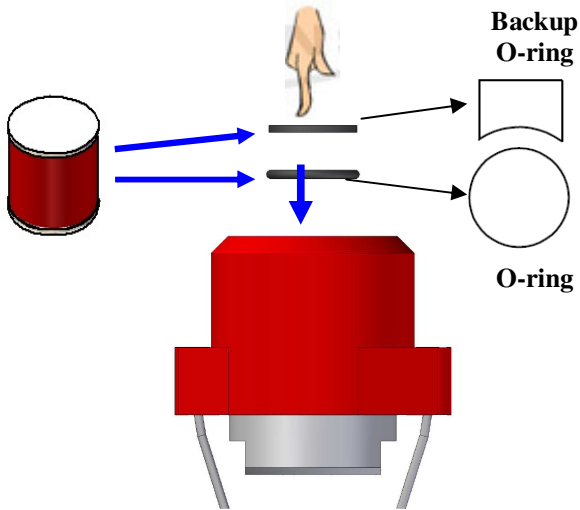
B. Screw in poppet retainer.



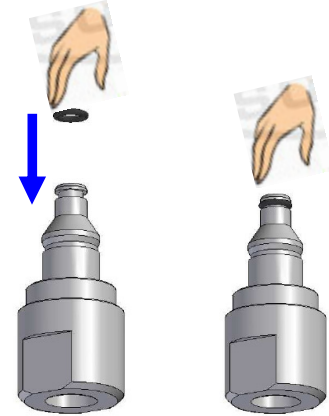
C. Torque to 20Nm.



3. Install new O-rings.

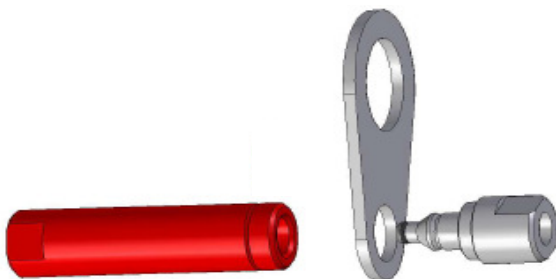


4. Place O-ring

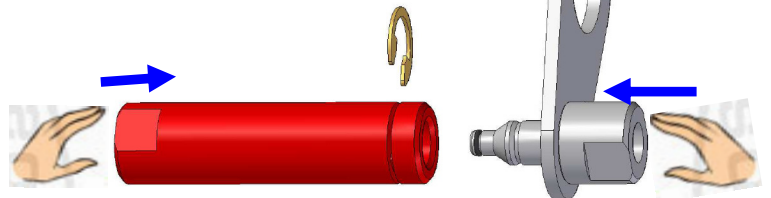


5. Assemble vent line

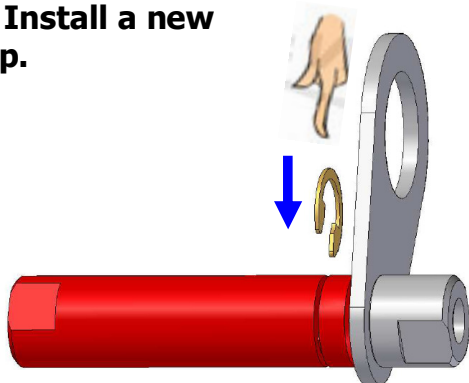
A.



B. Push vent breakaway parts together.



C. Install a new clip.

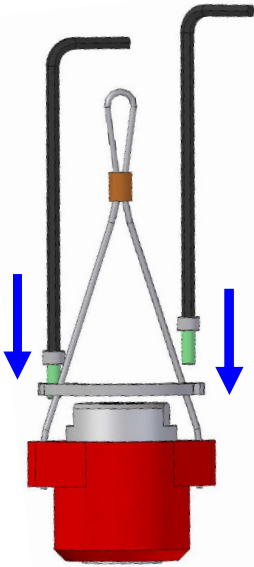


D.

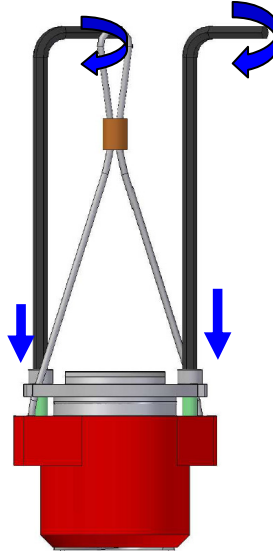


6. Screw in the assembly tool.

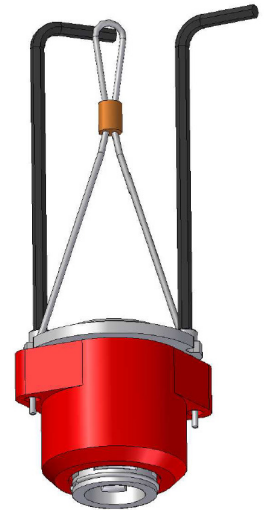
A.



B.

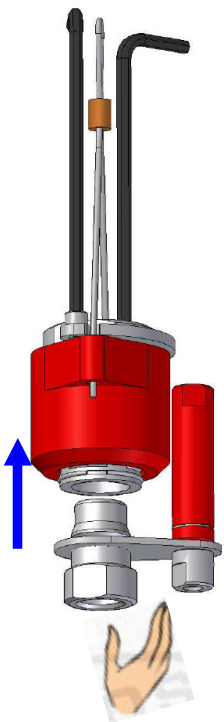


C.

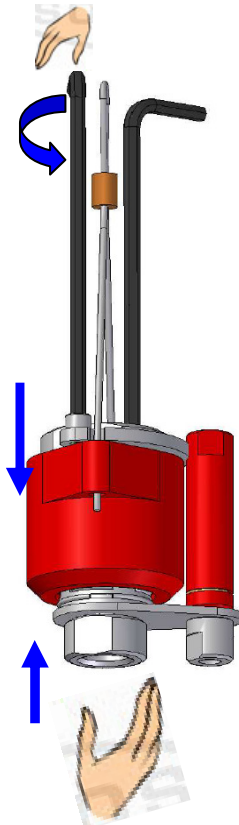


7. Insert the male part and remove the assembly tool.

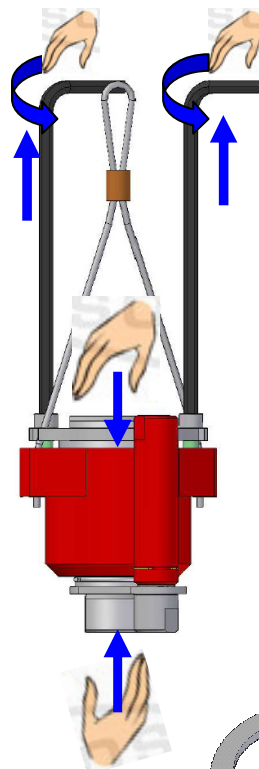
A.



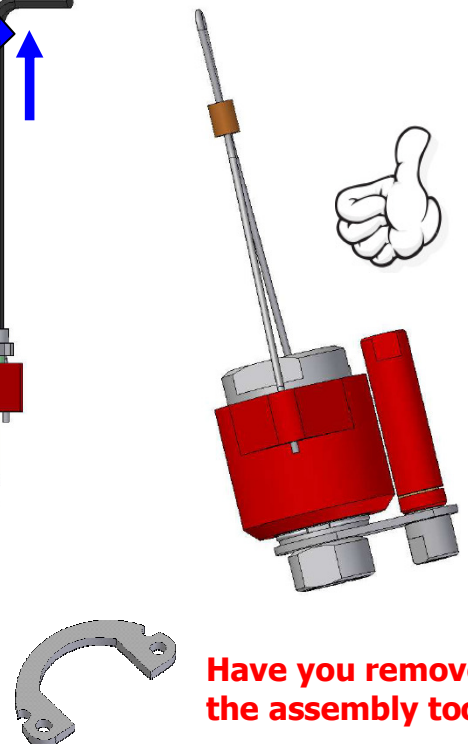
B.



C.



D. Done



Have you removed the assembly tool?