



# 100 Series Sandwich Valves Ready to Mount

## Applications

Dispenser Manifolds, Priority Panels, Emergency Isolation and applications where easy service is required. Suitable for CNG, Helium, Bio-Gas, Nitrogen, Air and other gases on request.



SV104-4O6SDDN-0120 - Sandwich Valve

## Materials

| Item | Description | Material            |
|------|-------------|---------------------|
| 1    | Valve Body  | 304 Stainless Steel |
| 2    | Valve Cap   | 304 Stainless Steel |
| 3    | Seat        | Delrin              |
| 4    | Ball        | 316 Stainless Steel |
| 5    | Stem        | 316 Stainless Steel |
| 6    | Thrust      | Delrin              |

| Item | Description            | Material            |
|------|------------------------|---------------------|
| 7    | O-ring                 | Nitrile             |
| 8    | O-ring Backup          | Nitrile             |
| 9    | Gland                  | Delrin              |
| 10   | Locking Tab            | 304 Stainless Steel |
| 11   | Half Nut               | 304 Stainless Steel |
| 12   | Sealing Surface O-ring | Nitrile             |

## Product Information

Includes valve, actuator mounting bracket, drive dog and screws.

Service kits are easily installed and readily available.

All products are manufactured under ISO 9001 accredited standards.

Mounting brackets and drive dogs designed to meet standard ISO 5211 pattern, allowing user multiple actuation options.

Handle options available on request.

3/4" valve tested to NGV4.6 option available on request.

CRN OC 19297.512346789OYTN.

Complies to PED 2014/68/EU.

More product information available online at [www.OasisNGV.com/resources](http://www.OasisNGV.com/resources).

## Features & Benefits

Designed for manifold or valve applications where minimizing service down time is critical.

Bolt-in, quick change design which fits into a manifold or uses end caps for your flow control requirements.

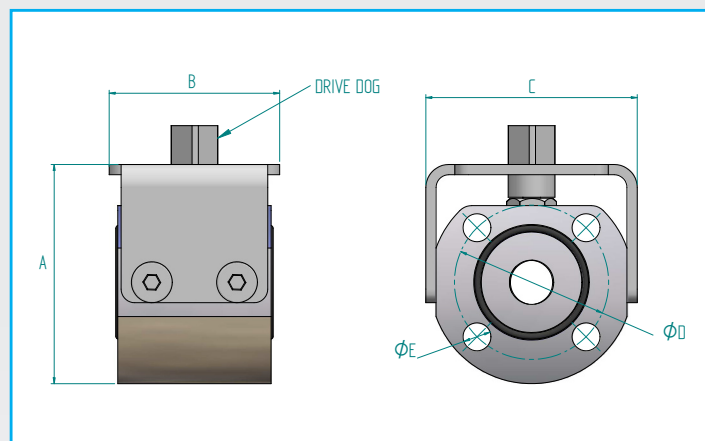
Using the proven Oasis floating ball technology the sandwich valve cycles for longer than any other known CNG ball valve.

Oasis can crate manifolds to your specifications. Talk to Oasis, Engineer to Engineer to craft a solution for you.



# 100 Series Sandwich Valves Ready to Mount

## Dimensions



## Dimensions (mm)

| Part Code           | Size | A     | B  | C    | D     | E    | Bracket Bolt Pattern | Drive Dog Size |
|---------------------|------|-------|----|------|-------|------|----------------------|----------------|
| SV103-4O6SDDN-0120  | 3/8" | 60    | 48 | 56   | 42    | 8.2  | F03/F04              | 11             |
| SV103-4O6SDDN-0130  | 3/8" | 60    | 48 | 56   | 42    | 8.2  | F03/F04              | 14             |
| SV104-4O06LDDN-0120 | 1/2" | 64.3  | 50 | 62   | 45.25 | 8.2  | F04/F05              | 11             |
| SV104-4O06LDDN-0130 | 1/2" | 64.3  | 50 | 62   | 42.25 | 8.2  | F04/F05              | 14             |
| SV104-4O06LDDN-0140 | 1/2" | 64.3  | 50 | 62   | 42.25 | 8.2  | F04/F05              | 17             |
| SV106-4O06LDDN-0130 | 3/4" | 106.8 | 67 | 87.5 | 65    | 12.5 | F07                  | 14             |
| SV106-4O06LDDN-0140 | 3/4" | 106.8 | 67 | 87.5 | 65    | 12.5 | F07                  | 17             |
| SV108-4O06LDDN-0140 | 1"   | 113.5 | 79 | 105  | 85    | 14.5 | F07                  | 17             |
| SV108-4O06LDDN-0150 | 1"   | 113.5 | 79 | 105  | 85    | 14.5 | F07                  | 22             |

## Product Specifications

| Part Code      | Mass<br>lb (kg) | Min. Operating<br>Pressure<br>bar (psi) * | Max. Operating<br>Pressure<br>bar (psi) ** | Min.<br>Temp.<br>°F (°C) | Max.<br>Temp.<br>°F (°C) | Stem Open<br>Torque<br>ft-lb (Nm) | Max Cycles<br>Before<br>Rekit ^ | Cv   | Service Kit   |
|----------------|-----------------|---|--|--------------------------|--------------------------|-----------------------------------|---------------------------------|------|---------------|
| SV103-4O6SDDN  | 1.3 (0.6)       | 34.5 (500)                                | 410 (6000)                                 | -40 (-40)                | 185 (85)                 | 2.2 (3)                           | 100,000                         | 9.3  | SV103-SK6SDDN |
| SV104-4O06LDDN | 1.7 (0.8)       | 0.5 (7)                                   | 410 (6000)                                 | -40 (-40)                | 185 (85)                 | 10.3 (14)                         | 100,000                         | 12.3 | SV104-SK6LDDN |
| SV106-4O06LDDN | 6.2 (2.8)       | 0.5 (7)                                   | 410 (6000)                                 | -40 (-40)                | 185 (85)                 | 22.8 (31)                         | 100,000                         | 31   | SV106-SK6LDDN |
| SV108-4O06LDDN | 7.7 (3.5)       | 0.5 (7)                                   | 410 (6000)                                 | -40 (-40)                | 185 (85)                 | 32.4 (44)                         | 100,000                         | 44.5 | SV108-SK6LDDN |

\* Minimum system pressure the product will hold constant bubble tight seal.

\*\* Maximum pressure at which the product can constantly operate at.

^ It is recommended that the sandwich valve is re-kitted on or before the maximum number of allowable cycles.

We reserve the right to modify product specifications without prior notice.



# 100 Series Sandwich Valves Ready to Mount

## Servicing Tool

Tool required to complete servicing of sandwich valve. Designed to fit in a 3/4" or 1" socket for easy removal and installation.

## Product Information

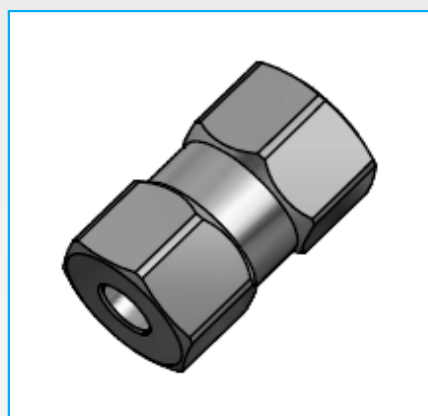
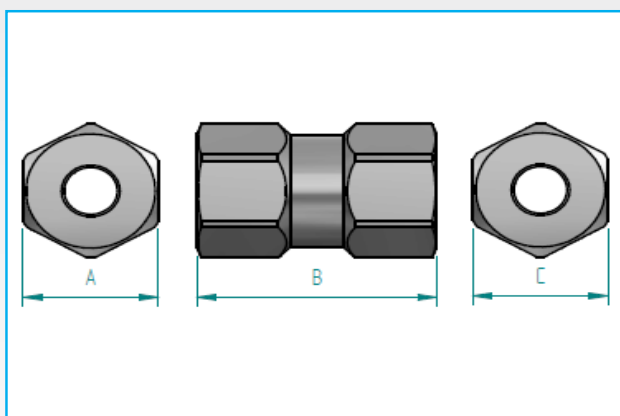
Made from 316 Stainless Steel.

Sold Separately.

Tightening torque stamped on body.

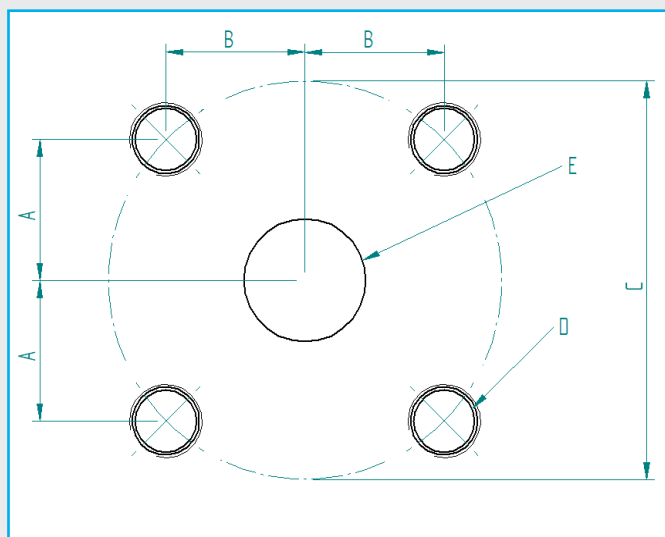
## Dimensions: Imperial (mm)

| Part Code  | A<br>AF      | B          | C<br>AF    |
|------------|--------------|------------|------------|
| TOOL-SV106 | 0.79" (19.9) | 1.57" (40) | 0.75" (19) |
| TOOL-SV108 | 1" (25.4)    | 1.77" (45) | 1" (25.4)  |

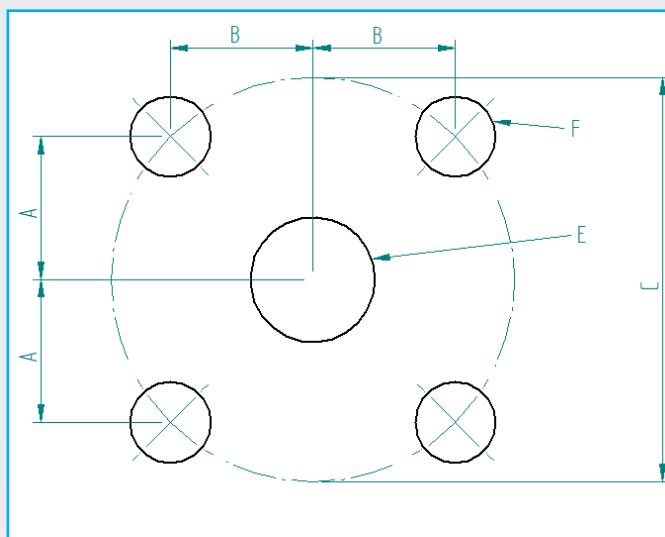




# 100 Series Sandwich Valves Ready to Mount



SV100 Series threaded manifold surface recommended dimensions.



SV100 Series through hole manifold surface recommended dimensions.

## Dimensions (mm)

| Part Code | A              | B              | ∅ C   | ∅ D(Threads - 4x bolt holes) | ∅ E(ports)   | ∅ F (Through Holes) | G (Surface finish)* |
|-----------|----------------|----------------|-------|------------------------------|--------------|---------------------|---------------------|
| SV103     | 14.9<br>14.8   | 14.9<br>14.8   | 42    | M8                           | 10<br>(3/8") | 9                   | 0.8 Ra Max          |
| SV104     | 16.05<br>15.95 | 16.05<br>15.95 | 45.25 | M8                           | 13<br>(1/2") | 9                   |                     |
| SV106     | 23.03<br>22.93 | 23.03<br>22.93 | 65    | M12                          | 20<br>(3/4") | 12.5                |                     |
| SV108     | 30.1<br>30     | 30.1<br>30     | 85    | M12                          | 26<br>(1")   | 12.5                |                     |

\* This surface finish on the sealing face is required for optimum sealing

The dimensions given are dimensions of the manifold mounting surface, for use with Oasis SV100 Series Sandwich Valves. Manifold design, including strength considerations and adherence to relevant standards, as well as testing and certification of the manifold, are the responsibility of the manifold designer.

## Dimensions (mm)

| Part Code | Recommended bolt class | Recommended Bolt size |
|-----------|------------------------|-----------------------|
| SV103     | Class 12.9             | M8                    |
| SV104     | Class 12.9             | M8                    |
| SV106     | Class 12.9             | M12                   |