



BV900 Series Ball Valve BSP Instruction Manual

▲ WARNING

Failure to follow these instructions or to properly install and maintain this equipment could result in gas leakage, fire or explosion causing property damage and personal injury or death.

Oasis products must be installed, operated and maintained by trained and competent personnel in accordance with all applicable local codes, rules and regulations in addition to the Oasis Instructions.

Oasis Engineering Ltd. will not be held liable in such circumstances where installation, operation and maintenance procedures were performed by incompetent personnel resulting in improper assembly, unsafe operation, equipment damage or personal injury.

Oasis recommends that all service technicians should watch the Product Servicing Video before attempting to service this part.

Oasis Engineering Ltd
129 Birch Avenue, Tauranga, New Zealand.
T: +64 7 928 3808
E: info@oasisNGV.com
W: www.OasisNGV.com



Instruction Manual

Warning!

High pressure gas and gas equipment can cause serious harm to both infrastructure and personnel if safety precautions are not followed.

Oasis recommends considering the use of the following PPE when working with high pressure along with any other site specific health and safety requirements:



Foot Protection



Hearing Protection



Safety Helmets



Hand Protection

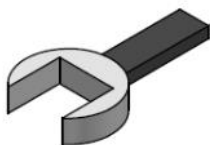


Safety Glasses



Ensure the system is clean of debris, vented and isolated before any installation or servicing work is carried out.

Tools Required



Spanner
(Wrenches)



Thread Tape



Anti Seize Grease
- Swagelok Silver Goop
- Omega 99
- or similar



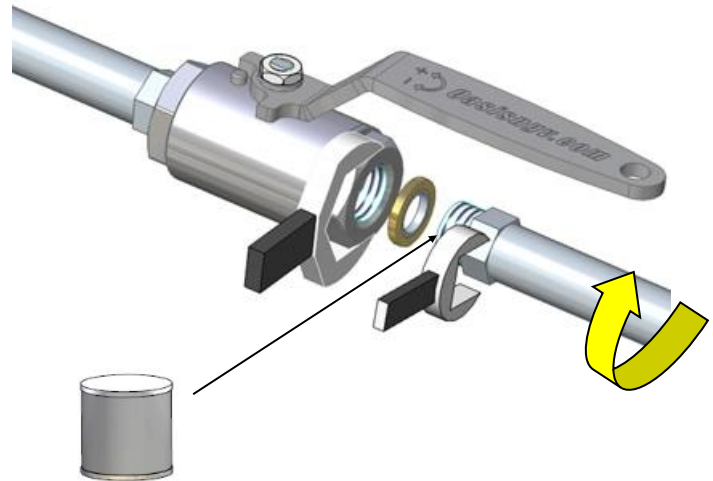
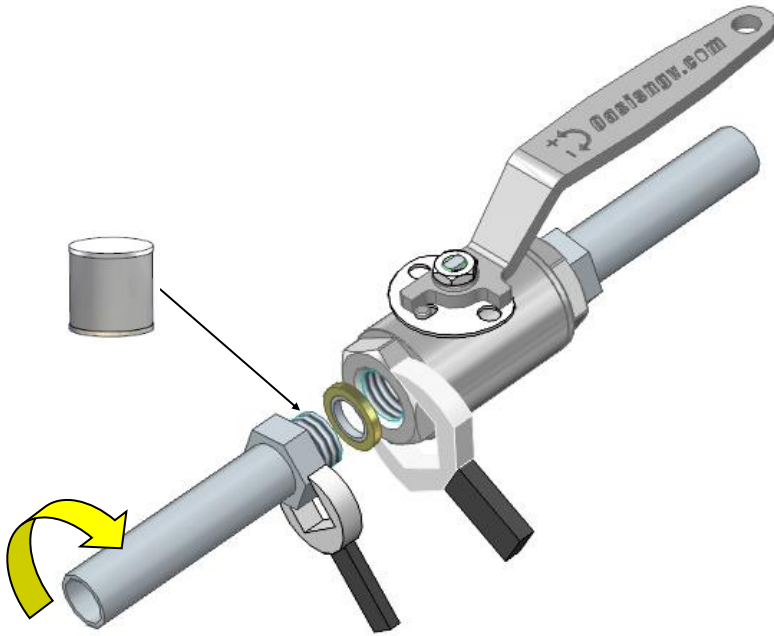
Silicone Grease
(Rocol MX22 or similar)



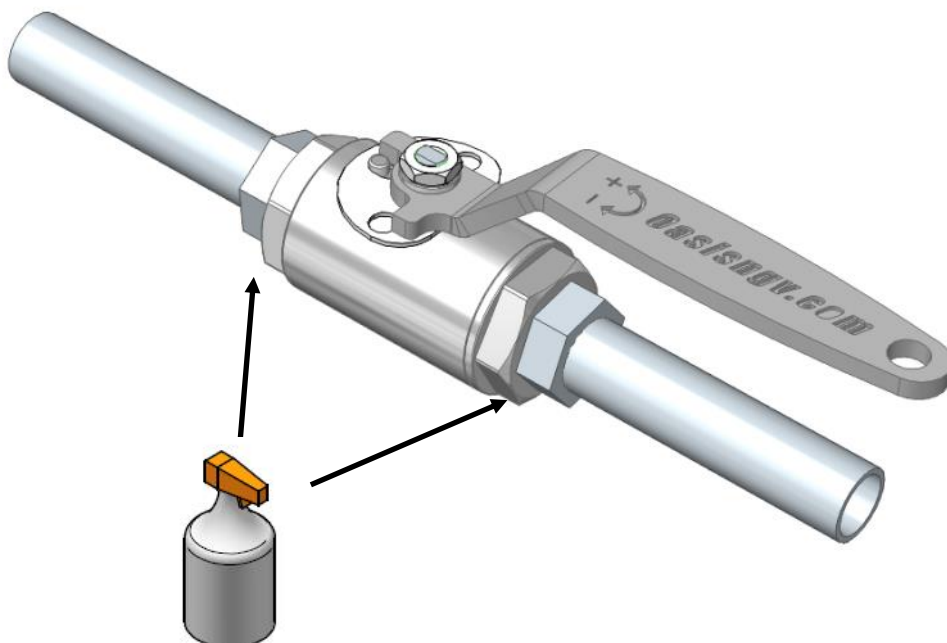
Spray bottle
(Snoop or soapy water)

1. Fit Dowty washer to fitting before applying anti-seize to thread. Torque to the fitting suppliers recommended tightening torque.

2. Fit Dowty washer to fitting before applying anti-seize to thread. Torque to the fitting suppliers recommended tightening torque.



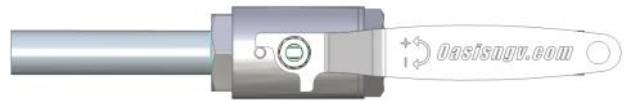
3. Leak test on first use using snoop or soapy water.



1. Closed

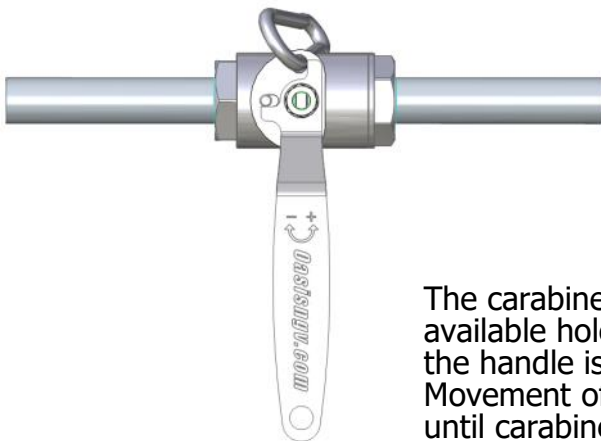


2. Opened



Important: Actuate valve 4 times before use to ensure initial sealing.

Optional - Lock-plate & Carabiner In Closed Position



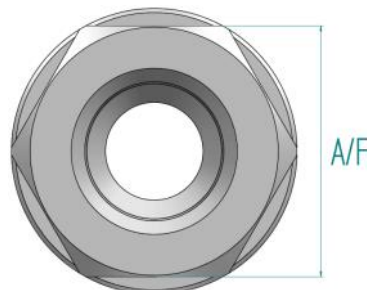
Optional - Lock-plate & Carabiner In Open Position



The carabiner is placed through the available hole on the locking plate when the handle is in the desired position. Movement of the handle is prevented until carabiner is removed.

Recommended Spanners for End Caps:

- BV902 = 34mm
- BV903 = 34mm
- BV904 = 34mm
- BV906 = 50mm
- BV908 = 50mm



Recommended Spanners for Stem Nuts:

- BV902 = 13mm
- BV903 = 13mm
- BV904 = 13mm
- BV906 = 19mm
- BV908 = 19mm

Service Kit Parts

BV902—BV903—BV904—BV906 — BV908

2 x Seats



1 x Stem



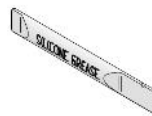
1 x Ball



1 x Gland



1 x Silicone



1 x Cap O-ring



1 x Locking Tab*



1 x Cap Back-up O-ring



* Only used when servicing actuated ball valves.

The Complete Oasis Seal Kit must be used

Tools Required



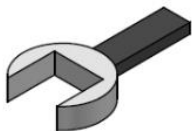
Cleaner (Warm Soapy Water or Similar)



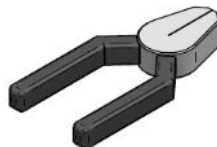
Pick Tool
Part Number:
TOOL-PICK
(Sold separately)



Anti Seize Grease
(Loctite 771 or Similar)
For All Threads



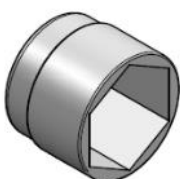
Spanner
(Wrenches)



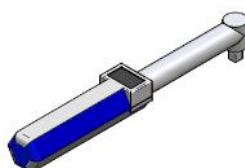
Pliers



Oasis Plastic Tool
Part Number:
TOOL-BVASSY
(Sold separately)
or Similar

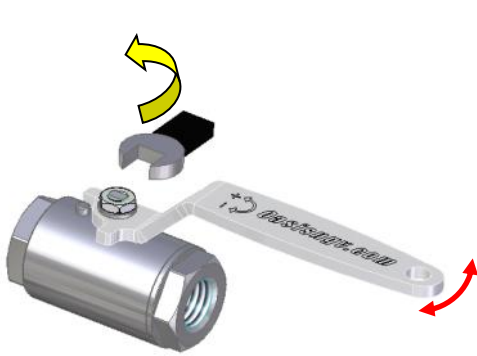


Sockets



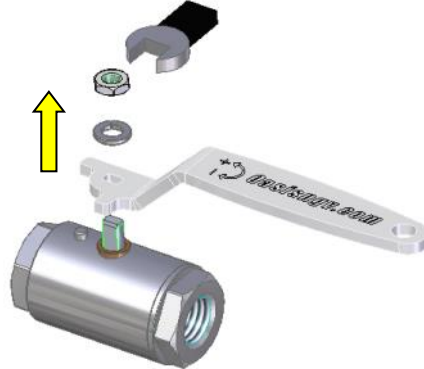
Torque Wrench

1. Unscrew stem nut.

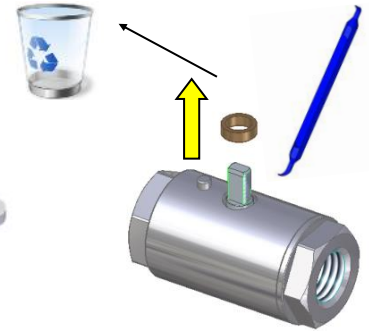


Open and close valve to ensure all trapped gas is released.

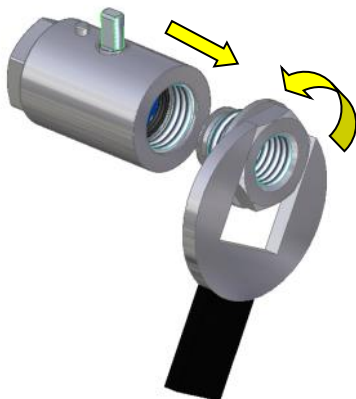
2. Remove handle.



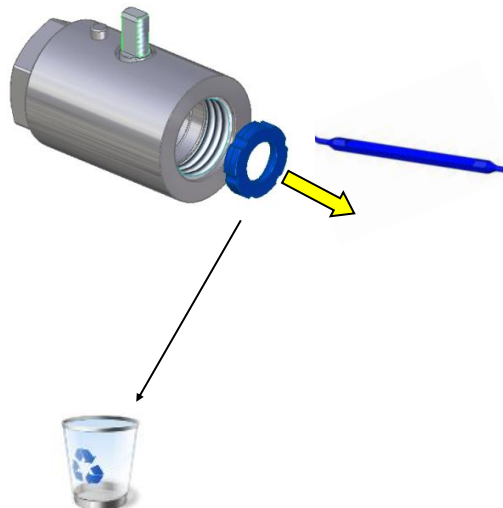
3. Discard gland.



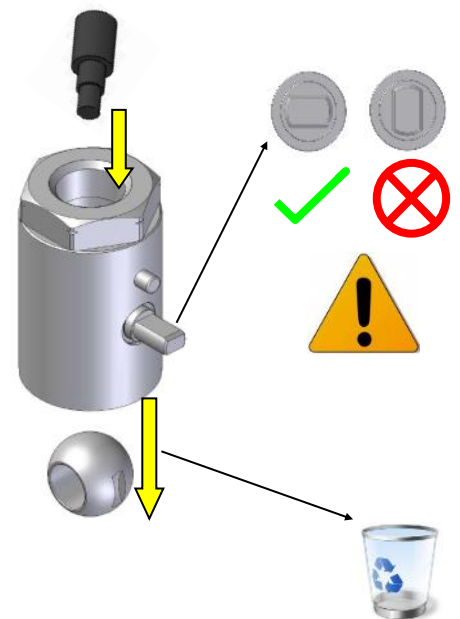
4. Remove end cap.



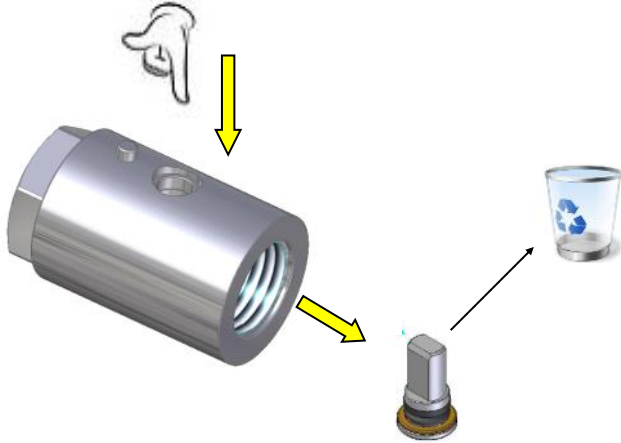
5. Discard seat.



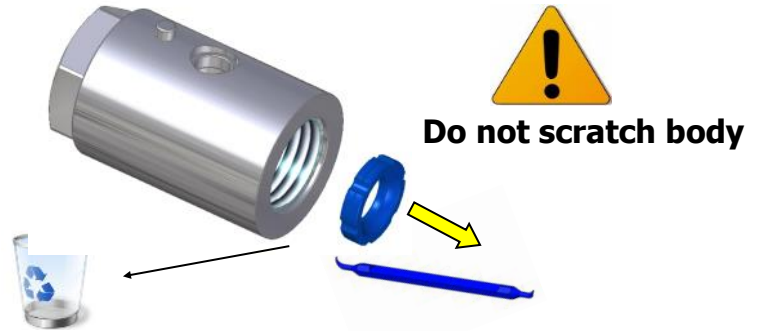
6. Remove ball.



7. Remove stem first and discard.



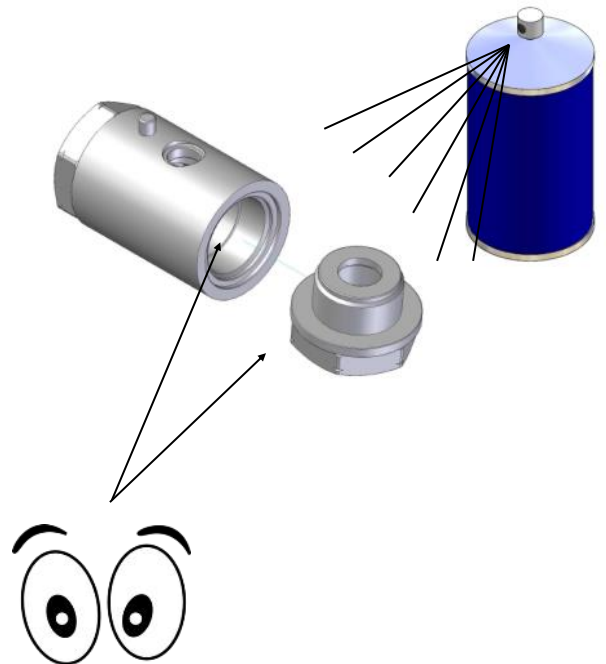
8. Remove and discard 2nd seat.



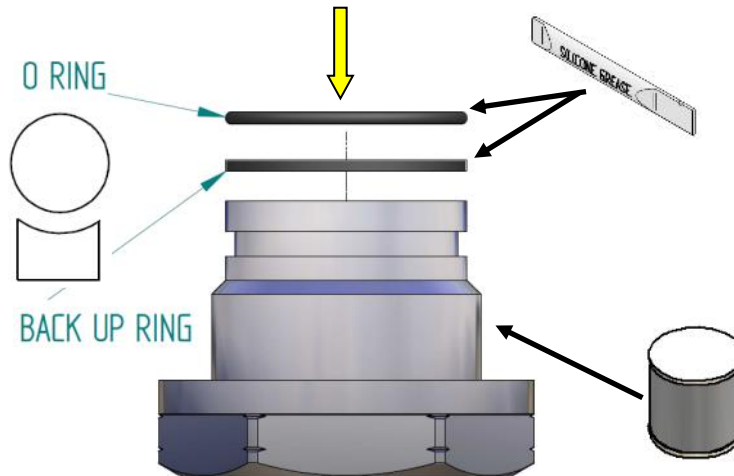
9. Remove cap O-rings and discard.



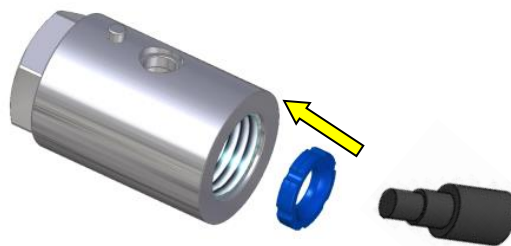
10. Clean body and end cap. Visually inspect parts for damage.



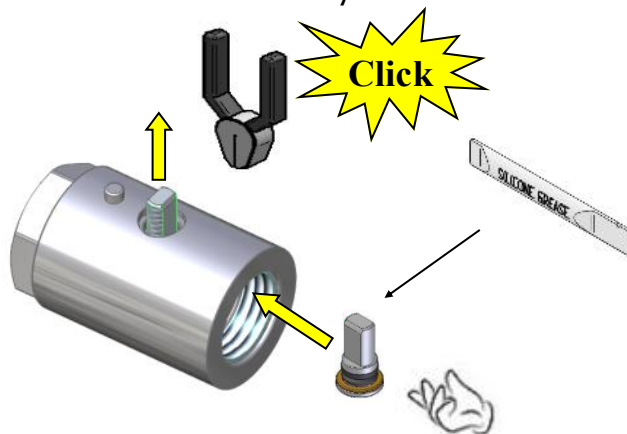
1. Apply grease to end cap O-rings and fit to end cap. Apply anti-seize to thread.



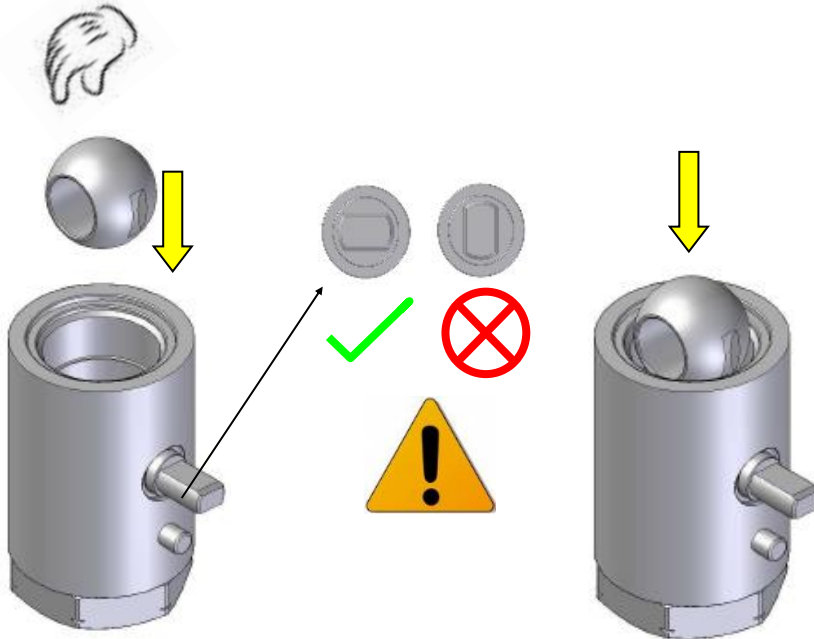
2. Install first new seat



3. Apply grease to stem O-ring and insert stem assembly.



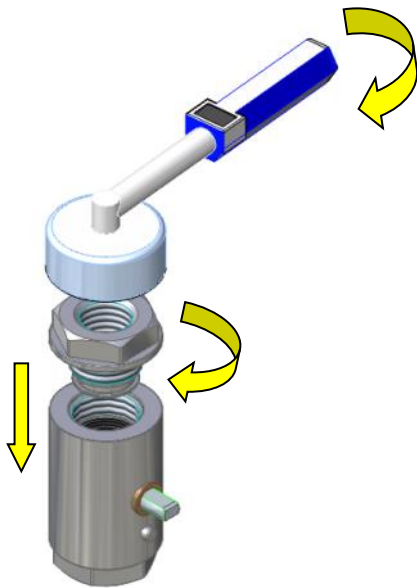
4. Insert Ball.



5. Install second new seat



6. Torque tight the end cap.

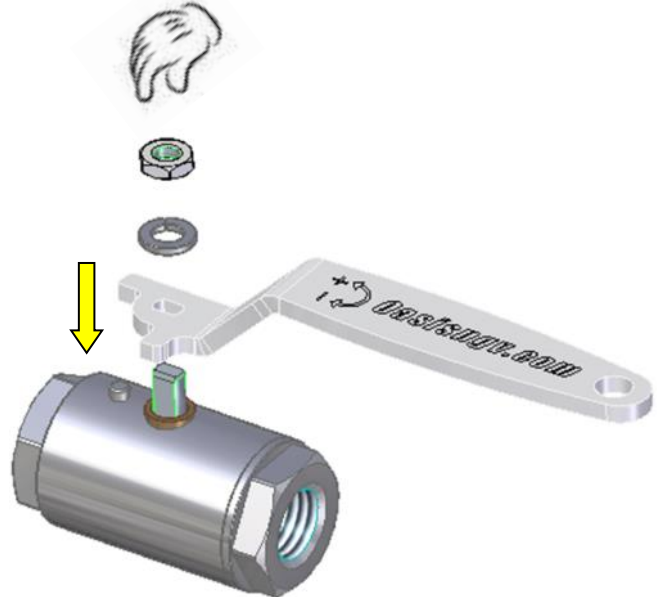
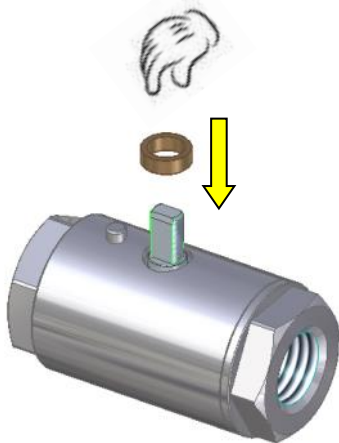


**Recommended
End Cap Torques:**

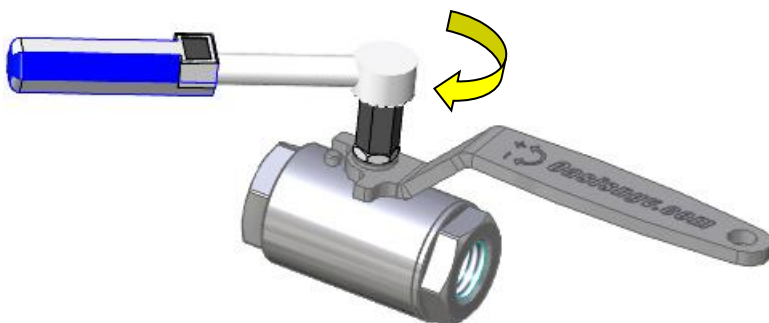
- BV902=60Nm
- BV903=60Nm
- BV904=60Nm
- BV906=160Nm
- BV908=160Nm

7. Install
nut.

gland and screw on handle



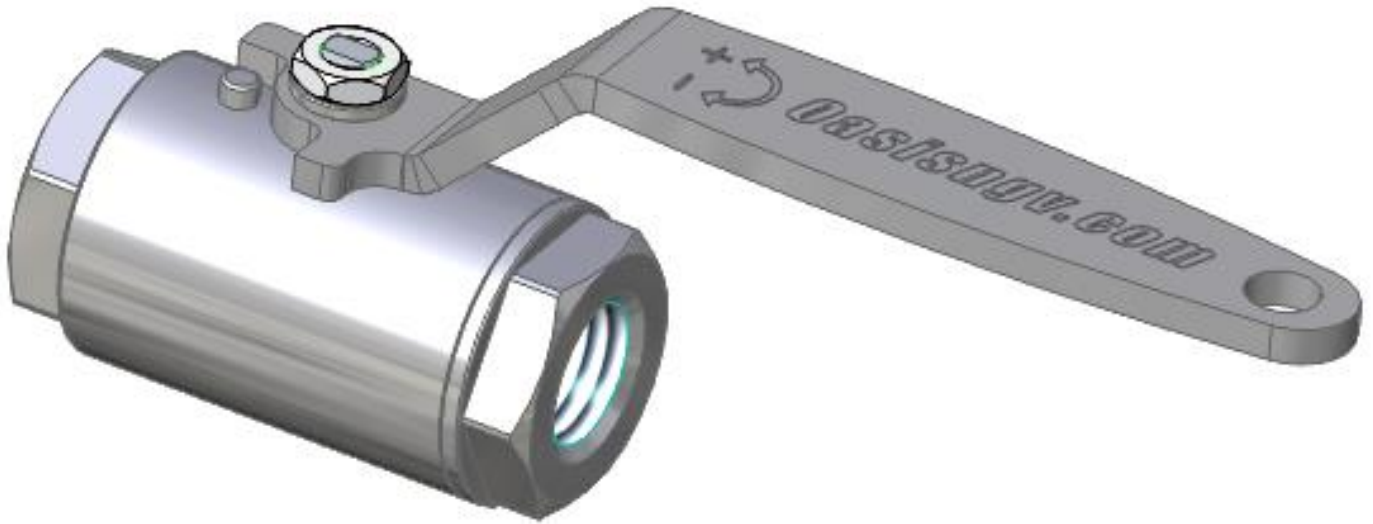
8. Tighten stem nut.



**Recommended
Handle Nut Torques:**

- BV902=3Nm
- BV903=3Nm
- BV904=3Nm
- BV906=6Nm
- BV908=6Nm

9. Servicing complete. Re-install as per the instructions on page 3 .



Important: Actuate valve 4 times before use to ensure initial sealing.